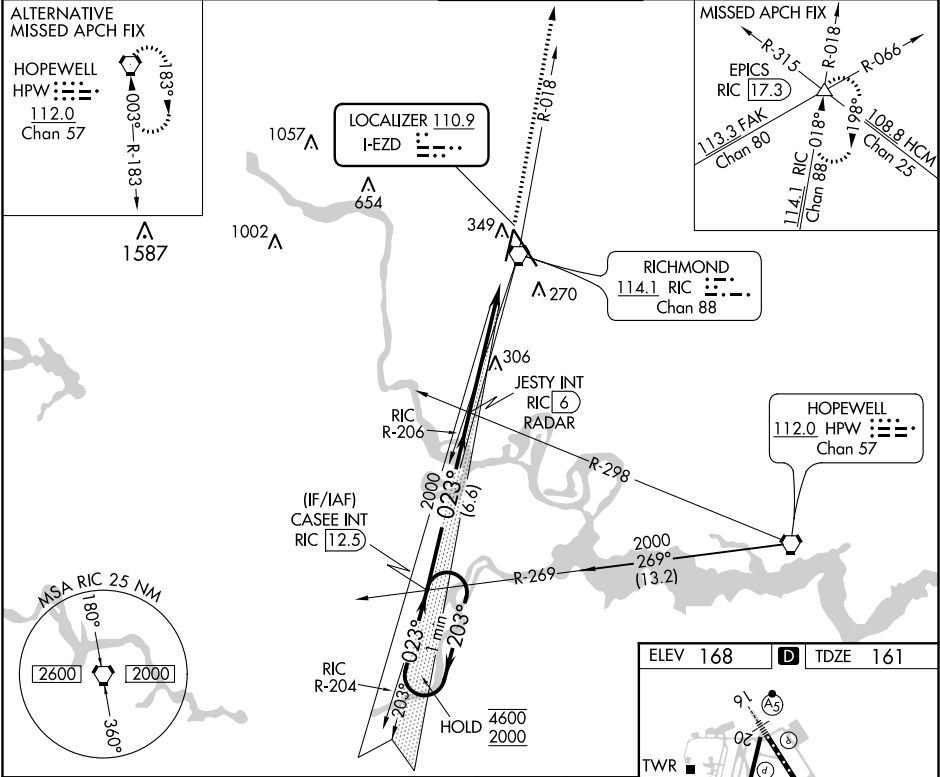


LOC I-EZD	APP CRS	Rwy Idg	6607
110.9	023°	TDZE	161
		Apt Elev	168

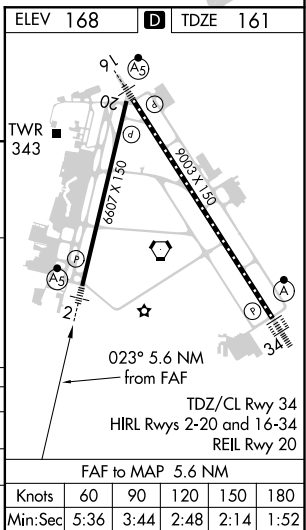
ILS or LOC RWY 2
RICHMOND INTL (RIC)

<p>⚠ Rwy 2 helicopter visibility reduction below ¾ SM NA. For inop ALS, increase S-ILS 2 all Cats visibility to ¾ SM and S-LOC 2 Cats A and B visibility to 1 SM.</p>	<p>MALSR</p> <p>A5</p>	<p>MISSED APPROACH: Climb to 2000 on RIC VORTAC R-018 to EPICS INT/RIC 17.3 DME and hold.</p>
--	-------------------------------	---

ATIS	POTOMAC APP CON	RICHMOND TOWER	GND CON	CLNC DEL
119.15 263.025	126.4 282.375 (001°-185°) 126.75 307.2 (186°-360°)	121.1 257.8	121.9 348.6	127.55 348.6



One Minute Holding Pattern	CASEE INT RIC 12.5	JESTY INT RIC 6 RADAR	2000	EPICS
4600 ← 203°	2000 → 023°	2000	2000	RIC R-018
GS 3.00° TCH 50				RIC 0.5
	6.6 NM	5.6 NM		
CATEGORY	A	B	C	D
S-ILS 2		457-¾ 296 (300-¾)		
S-LOC 2		560-¾ 399 (400-¾)		
CIRCLING	660-1 492 (500-1)	700-1½ 532 (600-1½)	720-2 552 (600-2)	



NE-3, 03 DEC 2020 to 31 DEC 2020

NE-3, 03 DEC 2020 to 31 DEC 2020