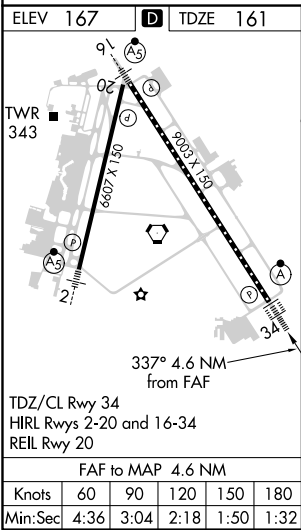
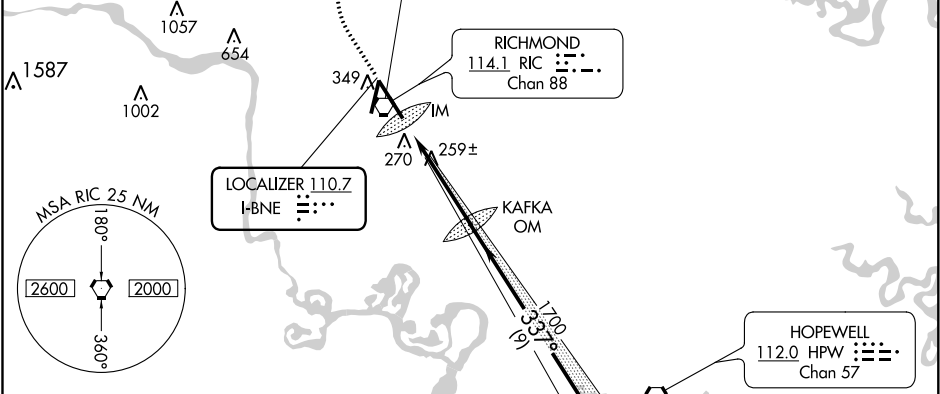
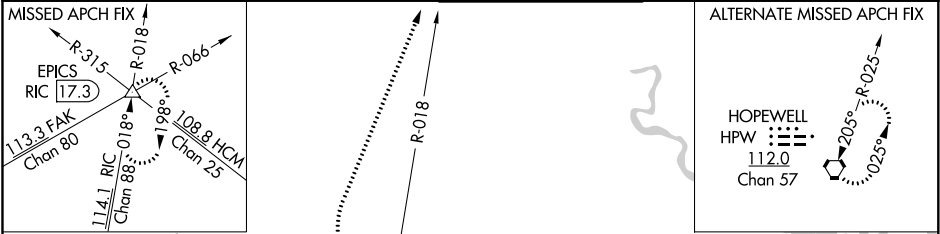


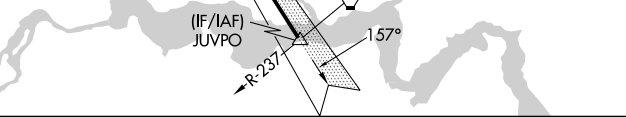
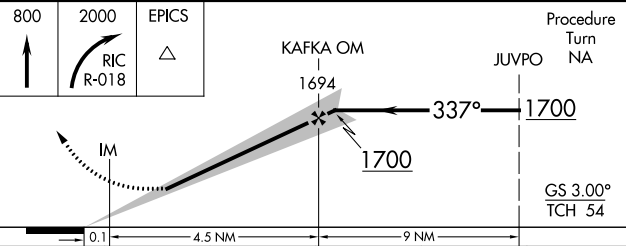
LOC I-BNE 110.7	APP CRS 337°	Rwy Idg TDZE 161 Apt Elev 167
---------------------------	------------------------	---

ILS or LOC RWY 34
RICHMOND INTL (RIC)

For inoperative ALSF-2, increase S-ILS 34 Cat E visibility to RVR 4000 and S-LOC 34 Cats C, D, and E visibility to RVR 5500.	ALSF-2 	MISSED APPROACH: Climb to 800 then climbing right turn to 2000 via RIC VORTAC R-018 to EPICS INT/RIC 17.3 DME and hold.
--	------------	---

ATIS 119.15 263.025	POTOMAC APP CON 126.4 282.375 (001°-185°) 126.75 307.2 (186°-360°)	RICHMOND TOWER 121.1 257.8	GND CON 121.9 348.6	CLNC DEL 127.55 348.6
-------------------------------	--	--------------------------------------	-------------------------------	---------------------------------



					
800 ↑	2000 RIC R-018	EPICS △	KAFKA OM 1694 JUVPO Procedure Turn NA		
					
CATEGORY	A	B	C	D	E
S-ILS 34	361/18		200 (200-½)		361/24 200 (200-½)
S-LOC 34	520/24	359 (400-½)	520/30		359 (400-¾)
CIRCLING	660-1	493 (500-1)	660-1½ 493 (500-½)	720-2 553 (600-2)	740-2 573 (600-2)