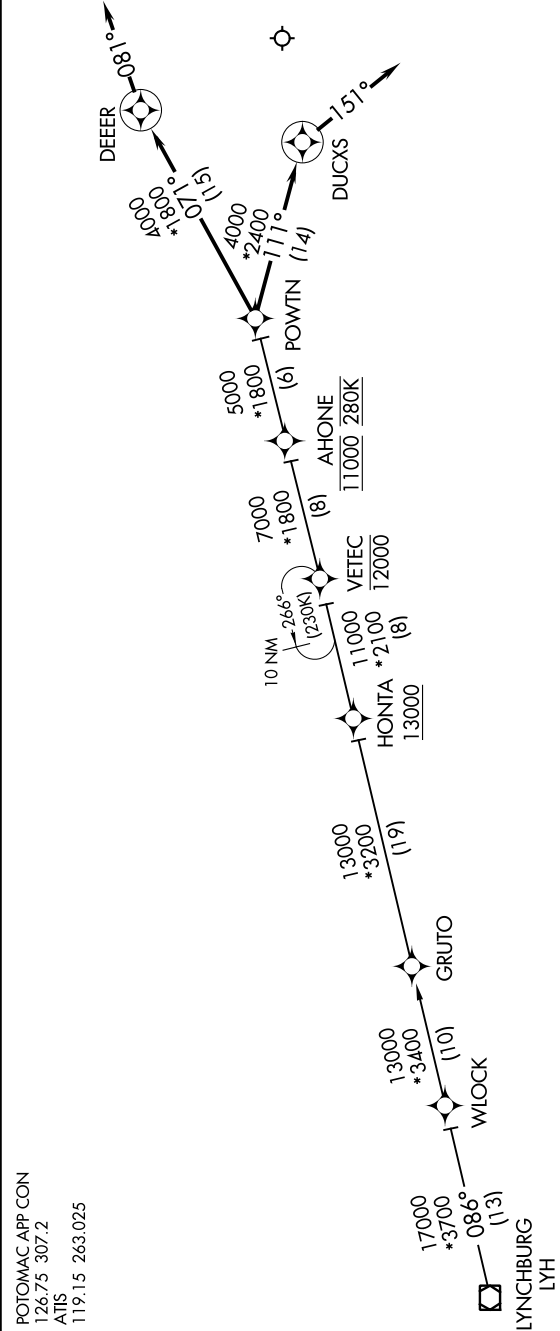


NE-3, 03 DEC 2020 to 31 DEC 2020



ARRIVAL ROUTE DESCRIPTION

LYNCHBURG TRANSITION (LYH.POWTN5)

- NOTE: RADAR required.
- NOTE: RNAV 1.
- NOTE: DME/DME/IRU or GPS required.
- NOTE: Turbojet aircraft only.
- NOTE: Maintain last ATC assigned altitude until cleared to "descend via the POWTN STAR".
- NOTE: ARTCC will issue landing direction assignment (north or south) and Potomac TRACON will issue runway assignments.



LANDING NORTH RUNWAYS 2, 34: From POWTN on track 111° to DUCKS, then on heading 151° or as assigned by ATC. Expect RADAR vectors to final approach course.

LANDING SOUTH RUNWAYS 16, 20: From POWTN on track 071° to DEER, then on heading 081° or as assigned by ATC. Expect RADAR vectors to final approach course.

NOTE: Chart not to scale.

NE-3, 03 DEC 2020 to 31 DEC 2020