

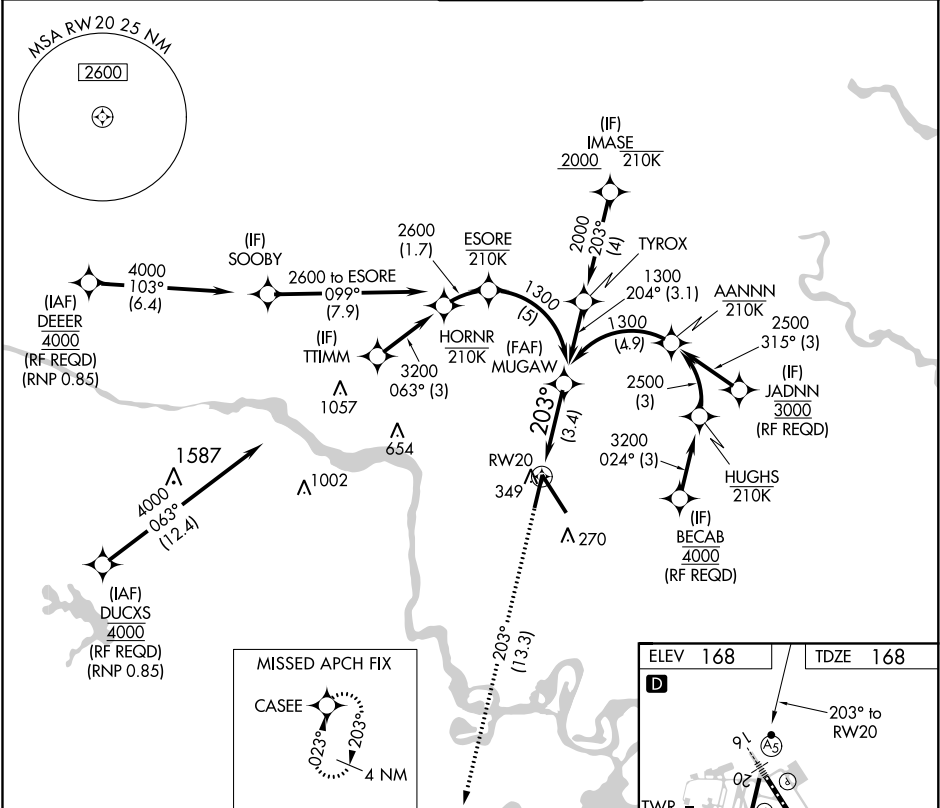
|         |          |      |
|---------|----------|------|
| APP CRS | Rwy Idg  | 6607 |
| 203°    | TDZE     | 168  |
|         | Apt Elev | 168  |

RNAV (RNP) Y RWY 20

RICHMOND INTL (RIC)

|  |  |
|--|--|
| RNP AR APCH.   | MISSED APPROACH: Climb to 2000 on track 203° CASEE and hold. |
| ▼ For uncompensated Baro-VNAV systems, procedure NA below -11°C or above 54°C. |  |

|                |   |                |             |              |
|----------------|---|----------------|-------------|--------------|
| ATIS           | POTOMAC APP CON                                       | RICHMOND TOWER | GND CON     | CLNC DEL     |
| 119.15 263.025 | 126.4 282.375 (001°-185°)<br>126.75 307.2 (186°-360°) | 121.1 257.8    | 121.9 348.6 | 127.55 348.6 |



2000

CASEE

See planview for multiple IF locations.

↑ tr 203°

MUGAW

1300

1300

GP 3.00°

TCH 49

|             |        |              |   |   |
|-------------|--------|--------------|---|---|
| CATEGORY    | A      | B            | C | D |
| RNP 0.11 DA | 505-1  | 337 (400-1)  |   |   |
| RNP 0.30 DA | 613-1½ | 445 (500-1½) |   |   |

AUTHORIZATION REQUIRED

TDZ/CL Rwy 34

HIRL Rwy 2-20 and 16-34

REIL Rwy 20