

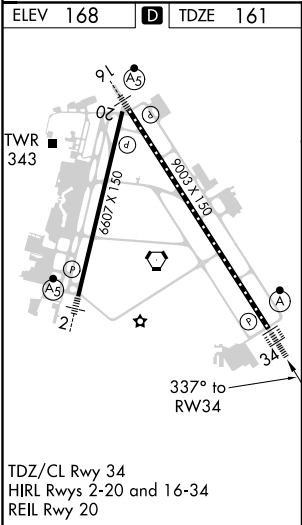
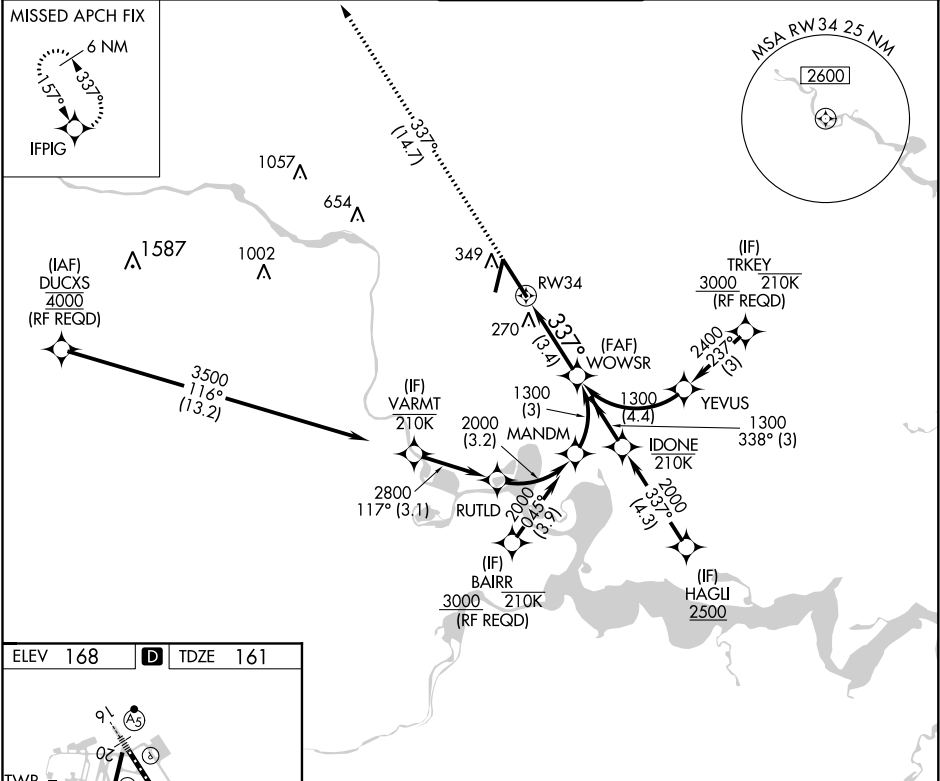
APP CRS	Rwy Idg	9003
337°	TDZE	161
	Apt Elev	168


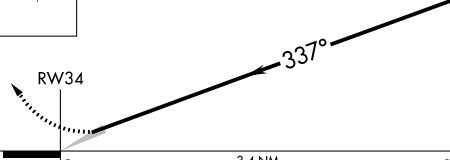
RNAV (RNP) Y RWY 34

RICHMOND INTL (RIC)

RNP AR APCH.	ALSF-2	MISSED APPROACH: Climb to 2500 on track 337° to IFPIG and hold.
▼ For uncompensated Baro-VNAV systems, procedure NA below -11°C or above 54°C. For inop ALS, increase RNP 0.30 all Cats visibility to 1¼ SM.		

ATIS	POTOMAC APP CON	RICHMOND TOWER	GND CON	CLNC DEL
119.15 263.025	126.4 282.375 126.75 307.2 (186°-360°)	121.1 257.8	121.9 348.6	127.55 348.6



2500	IFPIG	See planview for multiple IF locations. VGSI and RNAV glidepath not coincident (VGSI Angle 3.00°/TCH 79°).		WOWSR	
↑ fr 337°				1300	
		GP 3.00° TCH 54			
CATEGORY		A	B	C	D
RNP 0.11 DA			482/26	321 (400-½)	
RNP 0.30 DA			596/49	435 (500-1)	
AUTHORIZATION REQUIRED					