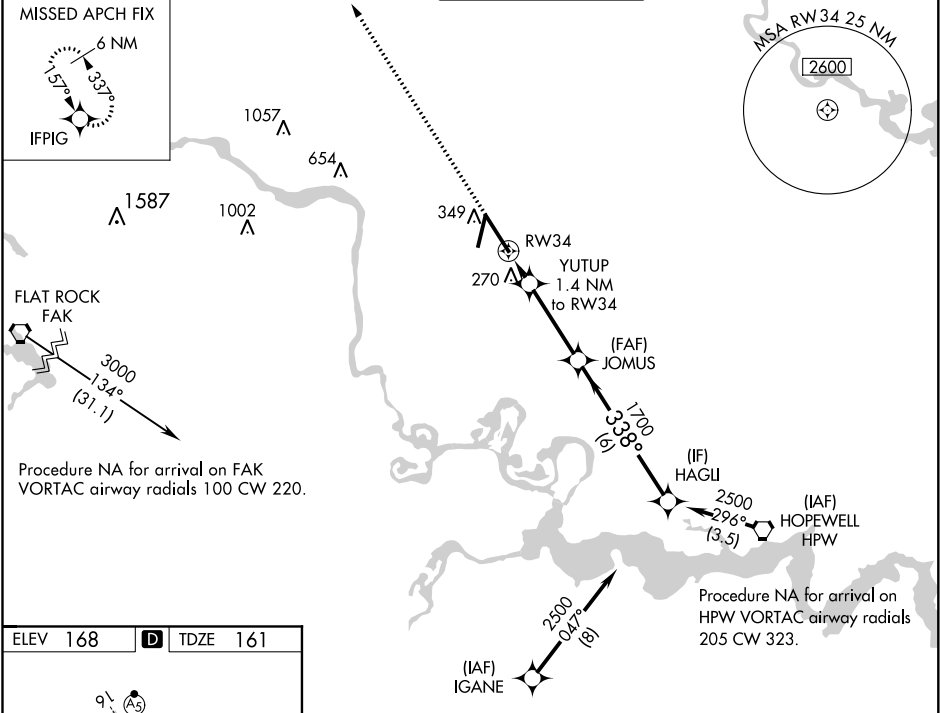


WAAS CH 97520 W34A	APP CRS 338°	Rwy Idg 9003 TDZE 161 Apt Elev 168
--	------------------------	---

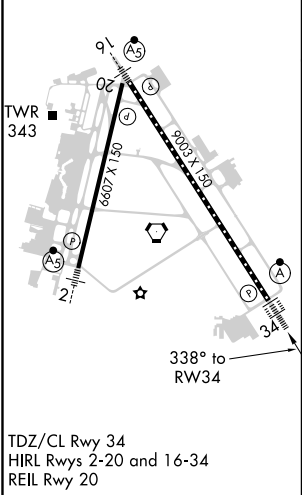
RNAV (GPS) Z RWY 34
RICHMOND INTL (RIC)

RNP APCH. For uncompensated Baro-VNAV systems, LNAV/VNAV NA below -11°C or above 54°C. For inop ALS, increase LNAV/VNAV all Cats visibility to 1¼ SM and LNAV Cats C and D visibility to RVR 5500.	ALSF-2 	MISSED APPROACH: Climb to 2500 direct IFPIG and hold.
---	------------	---

ATIS 119.15 263.025	POTOMAC APP CON 126.4 282.375 (001°-185°) 126.75 307.2 (186°-360°)	RICHMOND TOWER 121.1 257.8	GND CON 121.9 348.6	CLNC DEL 127.55 348.6
-------------------------------	--	--------------------------------------	-------------------------------	---------------------------------



ELEV 168	D	TDZE 161
-----------------	----------	-----------------



2500	IFPIG	VGSI and RNAV glidepath not coincident (VGSI Angle 3.00/TCH 79).	HAGLI	2500
*LNAV only.	YUTUP 1.4 NM to RW34	JOMUS 1700	338°	1700
RW34	1.4 NM	3.3 NM	6 NM	GP 3.00° TCH 54
CATEGORY	A	B	C	D
LPV DA		361/18	200 (200-½)	
LNAV/VNAV DA		530/37	369 (400-¾)	
LNAV MDA	520/24	359 (400-½)	520/30	359 (400-⅝)
CIRCLING	660-1	492 (500-1)	700-1½ 532 (600-1½)	720-2 552 (600-2)