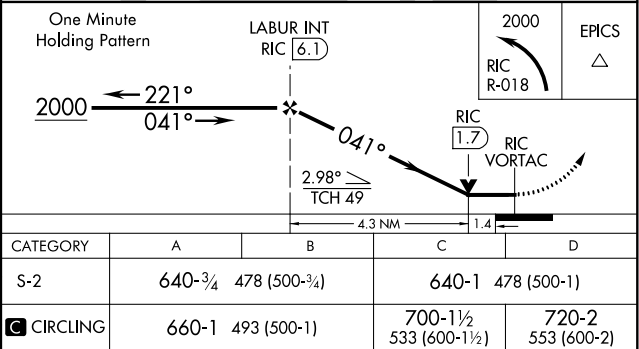
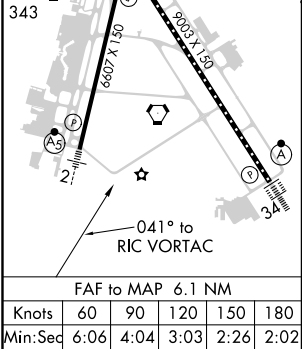
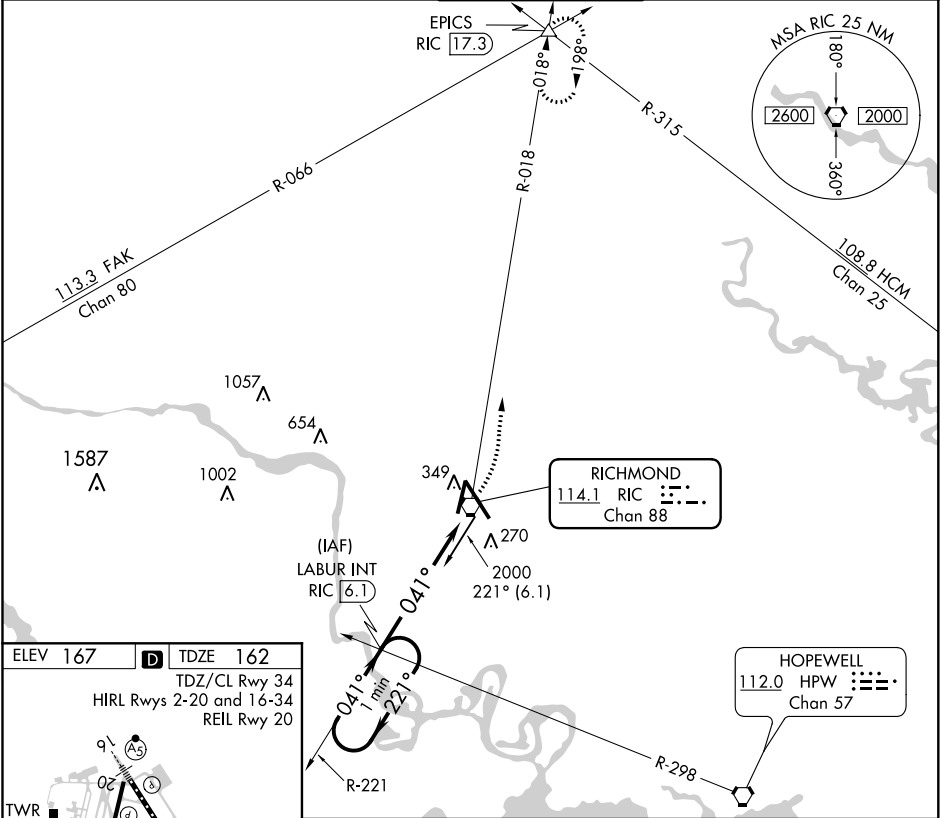


VORTAC RIC	APP CRS	Rwy Idg	6607
<b>114.1</b>	<b>041°</b>	TDZE	<b>162</b>
Chan 88		Apt Elev	<b>167</b>

VOR RWY 2  
RICHMOND INTL (RIC)

Rwy 2 helicopter visibility reduction below 3/4 SM NA. For inop ALS, increase S-2 Cat A/B visibility to 1 SM, and Cat C/D to 1 1/2 SM.	MALS	MISSED APPROACH: Climbing left turn to 2000 on RIC VORTAC R-018 to EPICS INT/RIC 17.3 DME and hold.
--	------	---

ATIS	POTOMAC APP CON	RICHMOND TOWER	GND CON	CLNC DEL
<b>119.15 263.025</b>	<b>126.4 282.375</b> (001°-185°) <b>126.75 307.2</b> (186°-360°)	<b>121.1 257.8</b>	<b>121.9 348.6</b>	<b>127.55 348.6</b>



NE-3, 03 DEC 2020 to 31 DEC 2020

NE-3, 03 DEC 2020 to 31 DEC 2020