

VORTAC RIC	APP CRS	Rwy Idg	9003
114.1	323°	TDZE	161
Chan 88		Apt Elev	167

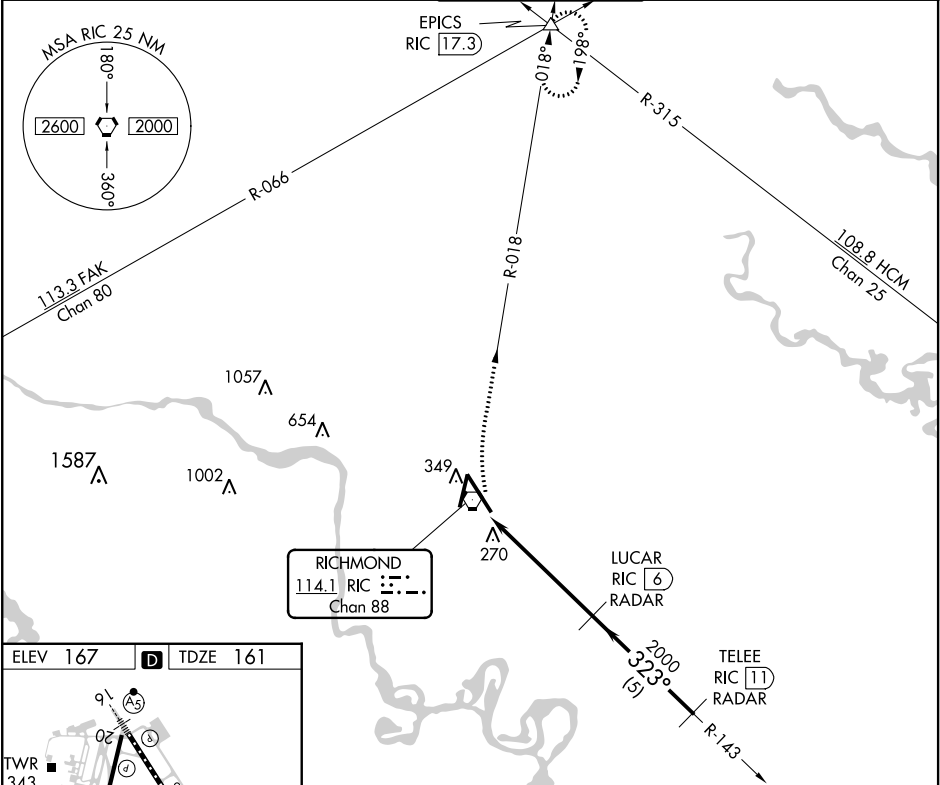
VOR RWY 34
RICHMOND INTL (RIC)

DME or RADAR required. RADAR required for procedure entry.

ALSF-2

MISSED APPROACH: Climbing right turn to 2000 via RIC R-018 to EPICS INT and hold.

ATIS	POTOMAC APP CON	RICHMOND TOWER	GND CON	CLNC DEL
119.15 263.025	126.4 282.375 (001°-185°) 126.75 307.2 (186°-360°)	121.1 257.8	121.9 348.6	127.55 348.6



ELEV 167 D TDZE 161

TDZ/CL Rwy 34
HIRL Rwy 2-20 and 16-34
REIL Rwy 20

FAF to MAP 5.3 NM

Knots	60	90	120	150	180
Min:Sec	5:18	3:32	2:39	2:07	1:46

2000	EPICS	VGSI and descent angles not coincident (VGSI Angle 3/00/TCH 79).		
RIC R-018	△	LUCAR RIC 6 RADAR	TELEEE RIC 11 RADAR	
RIC VORTAC	RIC 1.7	RIC 0.8	323°	2000
RIC 1.7		3.19° TCH 55	323°	2000
1 NM		4.3 NM	5 NM	
CATEGORY	A	B	C	D
S-34	540/24	379 (400-½)	540/40 379 (400-¾)	540/50 379 (400-1)
CIRCLING	660-1	493 (500-1)	700-1½ 533 (600-1½)	720-2 553 (600-2)

NE-3, 03 DEC 2020 to 31 DEC 2020

NE-3, 03 DEC 2020 to 31 DEC 2020