

APP CRS
058°

Rwy Idg
TDZE
Apt Elev

6800
1175
1175

RNAV (RNP) Z RWY 6

ROANOKE-BLACKSBURG RGNL/WOODRUM FIELD (ROA)

RNP AR APCH. RF required.

T

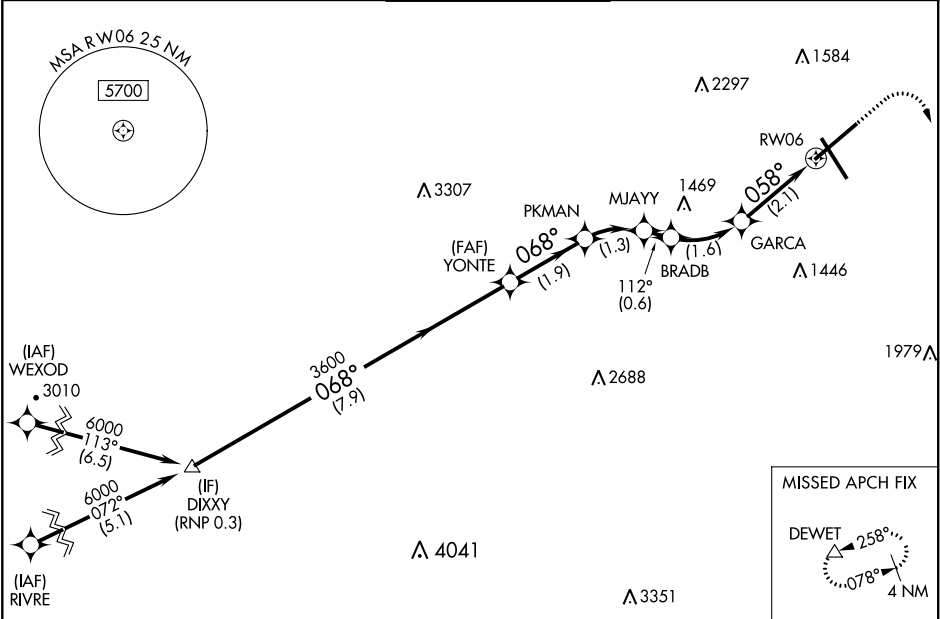
-13°C

For uncompensated Baro-VNAV systems,
procedure NA below -14°C or above 54°C.

MALSR

MISSED APPROACH: (Do not exceed 240K until DEWET) Climb to 1600 then climbing right turn to 5000 direct DEWET and hold, continue climb-in-hold to 5000. *Missed approach requires minimum climb of 370 feet per NM to 2900.

ATIS 132.375	ROANOKE APP CON 126.9 339.8	ROANOKE TOWER 118.3 257.8	GND CON 121.9 257.8	CLNC DEL 119.7
------------------------	---------------------------------------	-------------------------------------	-------------------------------	--------------------------



ELEV 1175

D

TDZE 1175

DIXXY

6000

GP 3.00°
TCH 58

YONTE

3600

PKMAN

3007

MJAYY

2587

BRADB

2396

GARCA

1879

RW06

7.9 NM

1.9 NM

1.3 NM

0.6 NM

1.6 NM

2.1 NM

CATEGORY

A

B

C

D

RNP 0.20 DA*

1425-1/2

250 (300-1/2)

RNP 0.30 DA

1605-3/4

430 (500-3/4)

AUTHORIZATION REQUIRED

REIL Rwy 6 and 24

HIRL Rwy 6-24 and 16-34