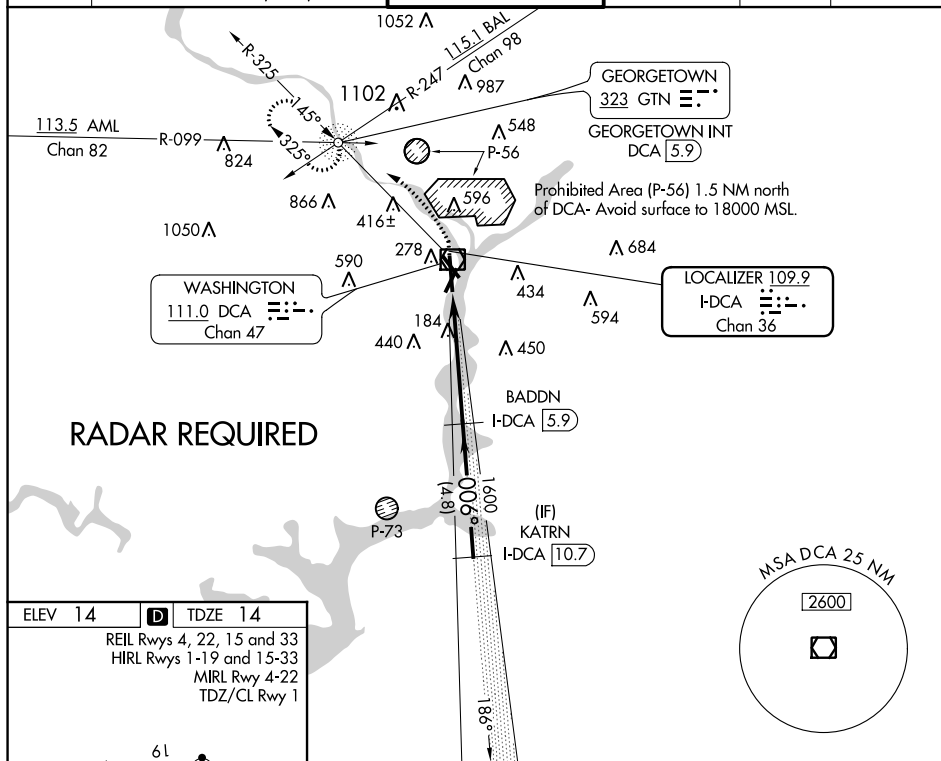


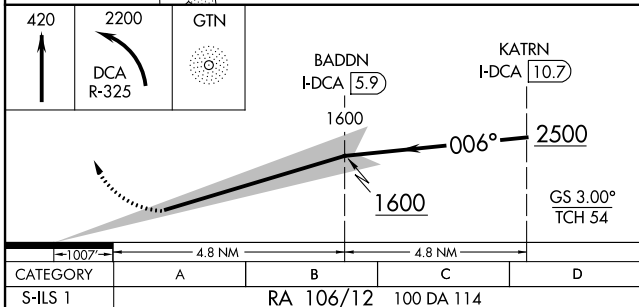
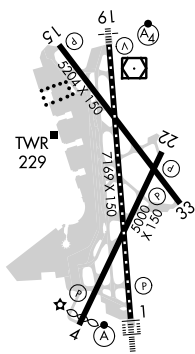
ILS RWY 1 (CAT II)
RONALD REAGAN WASHINGTON NATIONAL (DCA)

MISSED APPROACH: Climb to 420 then climbing left turn to 2200 on DCA VOR/DME R-325 to GTN NDB/INT/DCA 5.9 DME and hold.

D-ATIS 132.65	POTOMAC APP CON		WASHINGTON TOWER		GND CON		CLNC DEL	CPDLC
119.85 239.25	(WEST/SOUTH)		119.1 257.6		121.7 257.6		128.25	
124.2 360.8	(EAST)							



ELEV 14	D	TDZE 14
REIL Rwy 4, 22, 15 and 33 HIRL Rwy 1-19 and 15-33 MIRL Rwy 4-22 TDZ/CL Rwy 1		



CATEGORY II ILS- SPECIAL AIRCREW
& AIRCRAFT CERTIFICATION REQUIRED