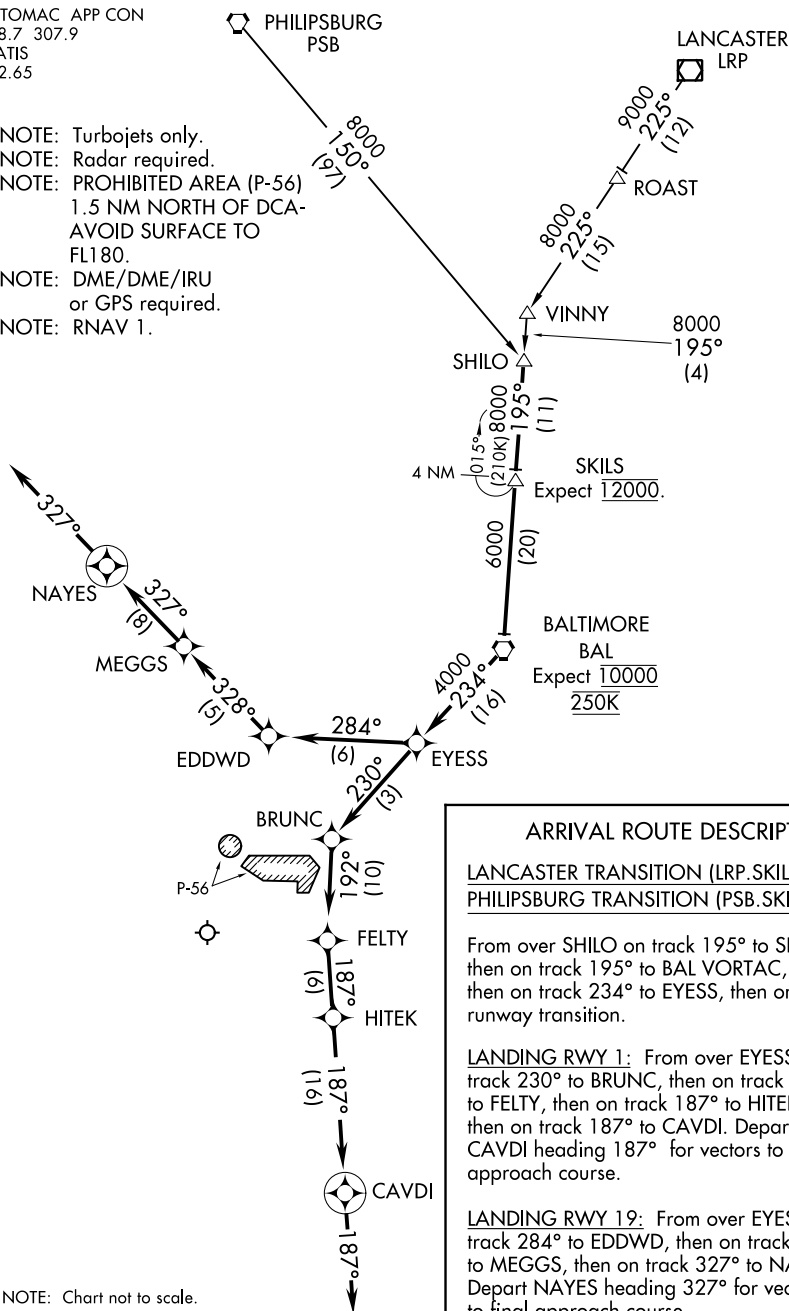


POTOMAC APP CON  
128.7 307.9  
D-ATIS  
132.65

NOTE: Turbojets only.  
NOTE: Radar required.  
NOTE: PROHIBITED AREA (P-56)  
1.5 NM NORTH OF DCA-  
AVOID SURFACE TO  
FL180.

NOTE: DME/DME/IRU  
or GPS required.

NOTE: RNAV 1.



## ARRIVAL ROUTE DESCRIPTION

LANCASTER TRANSITION (LRP.SKILS4):  
PHILIPSBURG TRANSITION (PSB.SKILS4):

From over SHILO on track 195° to SKILS,  
then on track 195° to BAL VORTAC,  
then on track 234° to EYESS, then on  
runway transition.

**LANDING RWY 1:** From over EYESS on track 230° to BRUNC, then on track 192° to FELTY, then on track 187° to HITEK, then on track 187° to CAVDI. Depart CAVDI heading 187° for vectors to final approach course.

**LANDING RWY 19:** From over EYESS on track 284° to EDDWD, then on track 328° to MEGGS, then on track 327° to NAYES. Depart NAYES heading 327° for vectors to final approach course.

NOTE: Chart not to scale.

## SKILS FOUR ARRIVAL (RNAV)

(SKILS.SKILS4) 29MAR18

WASHINGTON, DC

RONALD REAGAN WASHINGTON NATIONAL (DCA)

NE-3, 03 DEC 2020 to 31 DEC 2020