

WAAS CH 65815 W01A	APP CRS 015°	Rwy Idg 7012 TDZE 76 Apt Elev 80
----------------------------------------	------------------------	-------------------------------------------------------------

RNAV (GPS) RWY 1
NEW CASTLE (ILG)

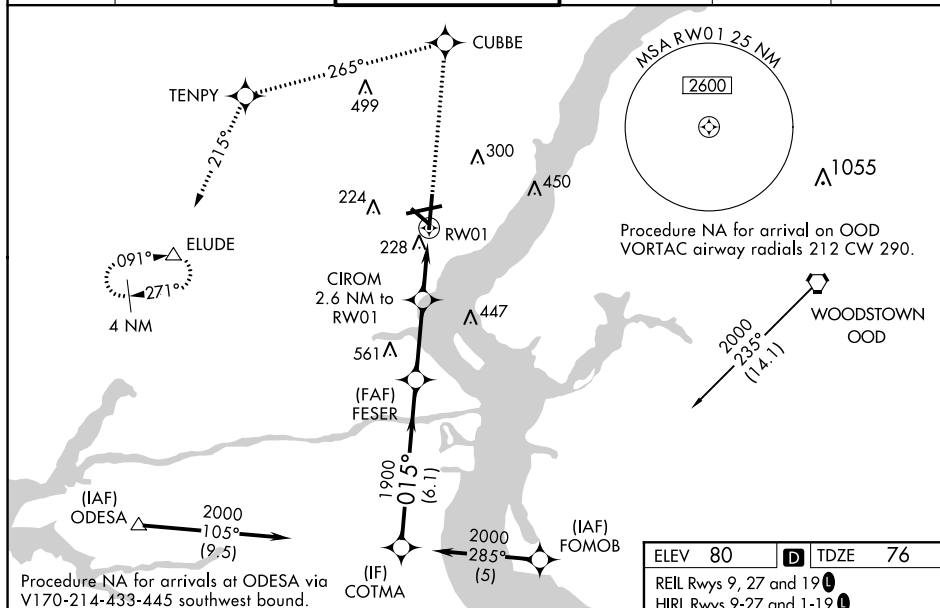
⚠ Inoperative table does not apply to LPV all Cats and LNAV Cats A and B.
⚠ Baro-VNAV NA when using Philadelphia Intl altimeter setting. For uncompensated Baro-VNAV systems, LNAV/VNAV NA below -15°C (5°F) or above 49°C (120°F). DME/DME RNP-0.3 NA. Visibility reduction by helicopters NA. When local altimeter setting not received, use Philadelphia Intl altimeter setting: increase LPV DA to 380, LNAV/VNAV DA to 579, and all MDA 60 feet; increase LNAV/VNAV all Cats visibility to RVR 6000. For inoperative MALSR, increase LNAV Cats C and D visibility ¼ mile. For inoperative MALSR, when using Philadelphia Intl altimeter setting, increase LNAV visibility Cat C ¼ mile.

MALSR



MISSED APPROACH: Climb to 2000 direct CUBBE and left turn via track 265° to TENPY and via track 214° to ELUDE and hold.

ATIS 123.95	PHILADELPHIA APP CON 118.35 323.1	WILMINGTON TOWER* 126.0 (CTAF) 352.05	GND CON 121.7 275.8	CLNC DEL 119.95	UNICOM 122.95
----------------	--------------------------------------	------------------------------------------	------------------------	--------------------	------------------



ELEV 80	D	TDZE 76
REIL Rwy 9, 27 and 19 L		
HIRL Rwy 9-27 and 1-19 L		
MIRL Rwy 14-32 L		

