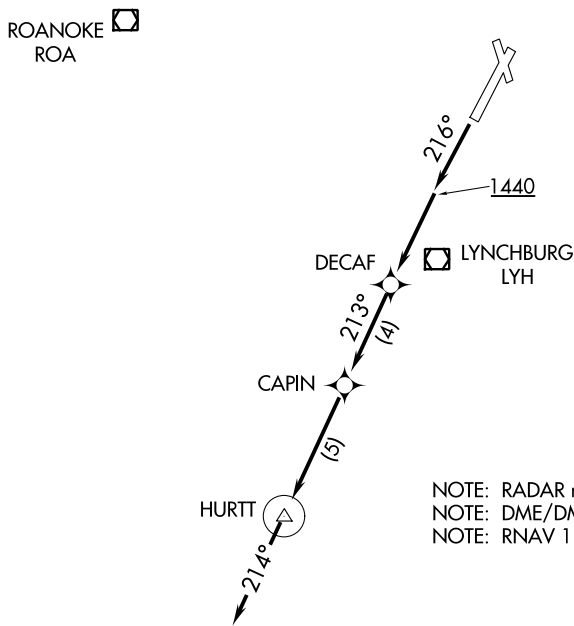


ATIS 119.8
GND CON
121.9
LYNCHBURG TOWER ★
127.65 (CTAF) 257.8
ROANOKE DEP CON
126.9 339.8

TAKEOFF MINIMUMS:
Rwys 4, 17, 35: NA-ATC.
Rwy 22: Standard with minimum
climb of 500' per NM to 1440.

TOP ALTITUDE:
4000



NOTE: RADAR required.
NOTE: DME/DME/IRU or GPS required.
NOTE: RNAV 1.

NOTE: Chart not to scale.

▼

DEPARTURE ROUTE DESCRIPTION

TAKEOFF RUNWAY 22: Climb heading 216° to 1440, then direct DECAF. Then on depicted route to HURTT, then on heading 214°, expect vectors on course. Maintain 4000 or as assigned by ATC. Expect filed altitude 10 minutes after departure.