

WAAS CH 97705 W22A	APP CRS 216°	Rwy Idg TDZE 938 Apt Elev 938
--	------------------------	---

RNAV (GPS) RWY 22

LYNCHBURG RGNL/PRESTON GLENN FIELD (LYH)

RNP APCH.

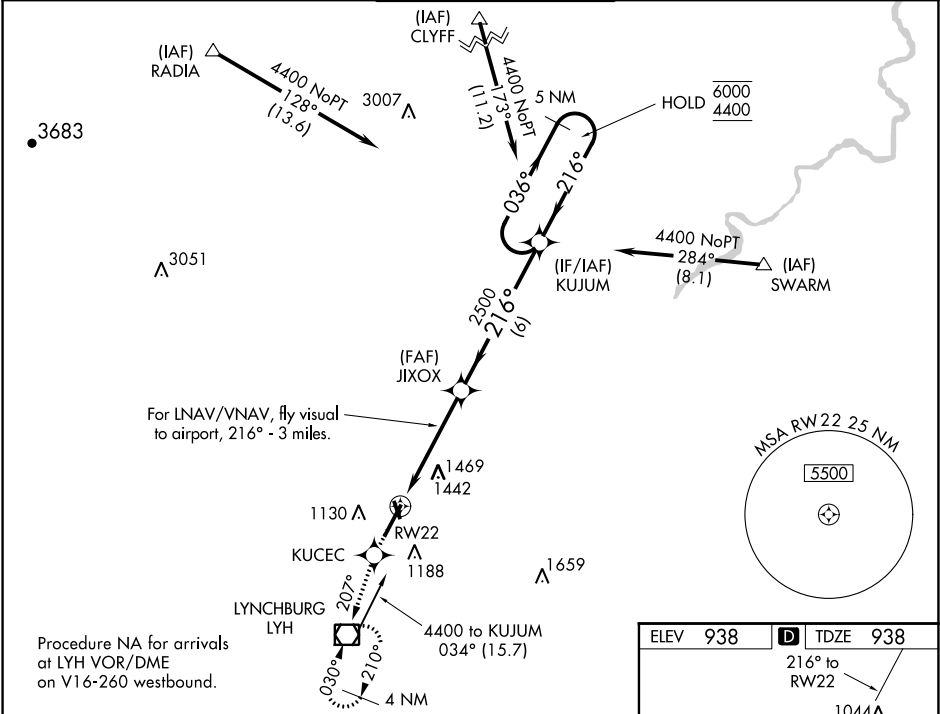
▼

For uncompensated Baro-VNAV systems, LNAV/VNAV NA below -16°C or above 47°C. Rwy 22 helicopter visibility reduction below ¾ SM NA. Circling Rwy 17 NA at night.

MISSED APPROACH:

Climb to 3000 direct KUCEC and track 207° to LYH VOR/DME and hold, continue climb-in hold to 3000.

ATIS 119.8	ROANOKE APP CON 135.0 254.325	LYNCHBURG TOWER ★ 127.65 (CTAF) 0 257.8	GND CON 121.9	UNICOM 122.95
----------------------	---	---	-------------------------	-------------------------



3000	KUCEC	tr 207°	LYH	VGSI and RNAV glidepath not coincident (VGSI Angle 3.00/TCH 45).	5 NM Holding Pattern
For LNAV/VNAV, fly visual to airport, 216° - 3 miles.	JIXOX	216°	036°	6000	4400
RWY 22	2500	4.7 NM	6 NM	GP 3.00° TCH 51	
CATEGORY	A	B	C	D	
LPV DA		1250-1	312 (400-1)		
LNAV/VNAV DA	1939-2	1001 (1100-2)	1939-3	1001 (1100-3)	
LNAV MDA	1720-1 782 (800-1)	1720-1 ¼ 782 (800-1 ¼)	1720-2 ¼ 782 (800-2 ¼)	1720-2 ½ 782 (800-2 ½)	
CIRCLING	1720-1 782 (800-1)	1780-1 ¼ 842 (900-1 ¼)	1800-2 ½ 862 (900-2 ½)	1800-2 ¾ 862 (900-2 ¾)	

