

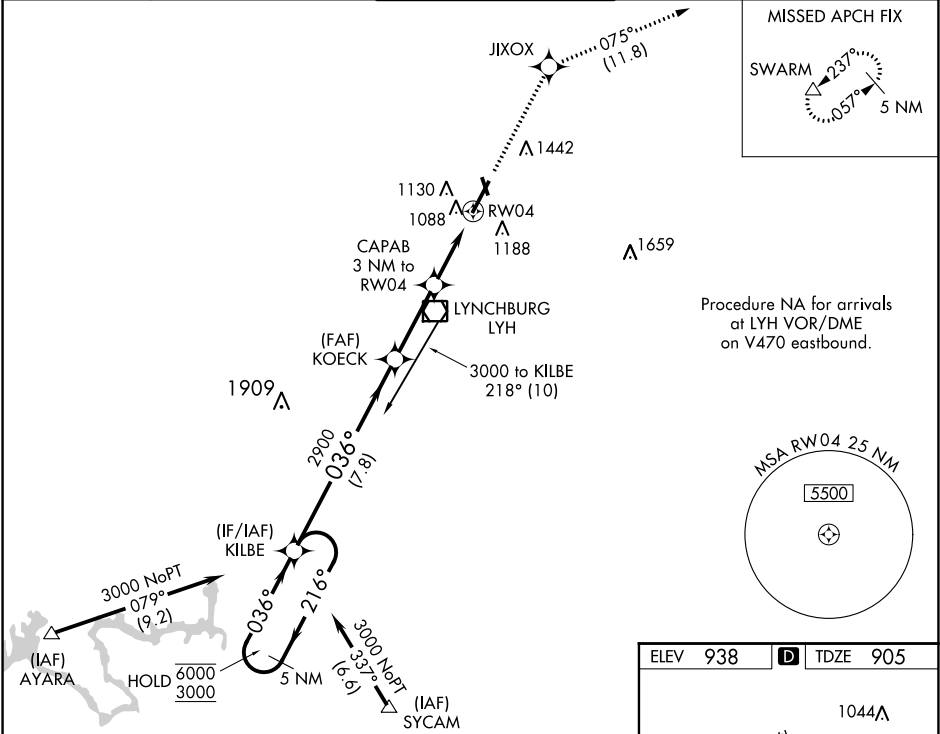
WAAS CH <b>58205</b> <b>W04A</b>	APP CRS <b>036°</b>	Rwy Idg TDZE <b>905</b> Apt Elev <b>938</b>
--	------------------------	---

RNAV (GPS) RWY 4

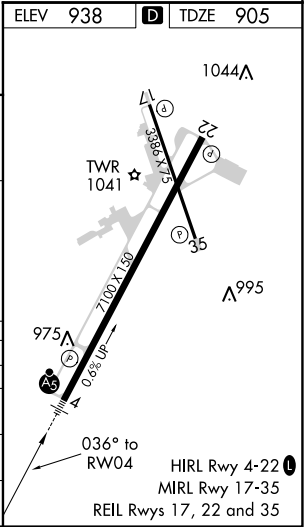
LYNCHBURG RGNL/PRESTON GLENN FIELD (LYH)

RNP APCH.	MALSR	MISSED APPROACH: Climb to 3500 direct JIXOX and track 075° to SWARM and hold.
▼ For uncompensated Baro-VNAV systems, LNAV/VNAV NA below -16°C or above 47°C. For inop ALS, increase LNAV Cat A and B visibility to RVR 5000. ▲ Circling Rwy 17 NA at night.		

ATIS <b>119.8</b>	ROANOKE APP CON <b>135.0 254.325</b>	LYNCHBURG TOWER ★ <b>127.65 (CTAF) 0 257.8</b>	GND CON <b>121.9</b>	UNICOM <b>122.95</b>
----------------------	---	---	-------------------------	-------------------------



5 NM Holding Pattern		3500	JIXOX	SWARM
KILBE		↑	✧	tr 075°
6000 ← 216°		*LNAV only		
3000 → 036°				
GP 3.00°				
TCH 58				
KOECK				
2900				
CAPAB 3 NM to *1.4 NM to RW04				
2900				
7.8 NM				
3 NM				
1.6 NM				
1.4 NM				
CATEGORY	A	B	C	D
LPV DA	1175/40		270 (300-¾)	
LNAV/VNAV DA	1394/60		489 (500-1¼)	
LNAV MDA	1400/40	495 (500-¾)	1400/50	495 (500-1)
CIRCLING	1660-1 722 (800-1)	1780-1¼ 842 (900-1¼)	1800-2½ 862 (900-2½)	1800-2¾ 862 (900-2¾)



RNAV (GPS) RWY 4

NE-3, 03 DEC 2020 to 31 DEC 2020

NE-3, 03 DEC 2020 to 31 DEC 2020