

ABERDEEN, MARYLAND

WAAS CH 70342 W22A	APCH CRS 218°	Rwy ldg TDZE Arpt Elev	7998 45 45
--------------------------	------------------	------------------------------	------------------

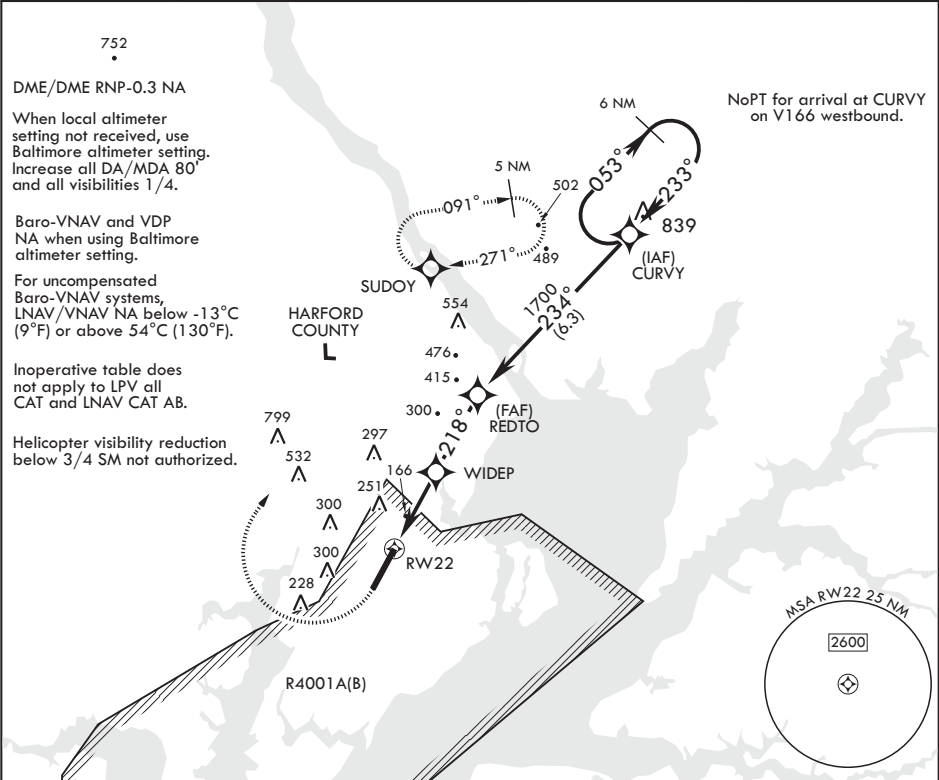
AL-555 (USA)

RNAV (GPS) RWY 22

PHILLIPS AAF (ABERDEEN PROVING GROUND) (KAPG)

	MISSED APPROACH: Climb to 500, then climbing right turn to 2000 direct SUDOY and hold.
--	--

ATIS ★ 124.425	POTOMAC APP CON/DEP CON 125.525 291.625	TOWER ★ 126.15 229.6	GND CON 121.9
-------------------	--	-------------------------	------------------



500	2000	SUDOY	VGSI and RNAV glidepath not coincident (VGSI angle 3.00/TCH 49).	CURVY	ELEV 45	218° to RW22	TDZE 45
Visual segment - Obstacles							
*LNAV only							
RW22	*1.2 NM to RW22	WIDEP	REDTO	218°	234°	053°	2100
		900*		1700		233°	
	2.5 NM	2.5 NM					
CATEGORY	A	B	C	D			
LPV DA	295-1	250	(300-1)				
LNAV/VNAV DA	480-1 3/8	435	(500-1 3/8)				
LNAV MDA	460-1	415	(500-1)				
CIRCLING	500-1 455 (500-1)	520-1 475 (500-1)	640-1 1/2 595 (600-1 1/2)	880-2 3/4 835 (900-2 3/4)			

TWR 147

7998 x 200

HIRL all Rwy's

REIL Rwy 22

ABERDEEN, MARYLAND

39°28'N - 76°10'W PHILLIPS AAF (ABERDEEN PROVING GROUND) (KAPG)

Amndt 2B 10SEP20

RNAV (GPS) RWY 22

NE-3, 03 DEC 2020 to 31 DEC 2020

NE-3, 03 DEC 2020 to 31 DEC 2020