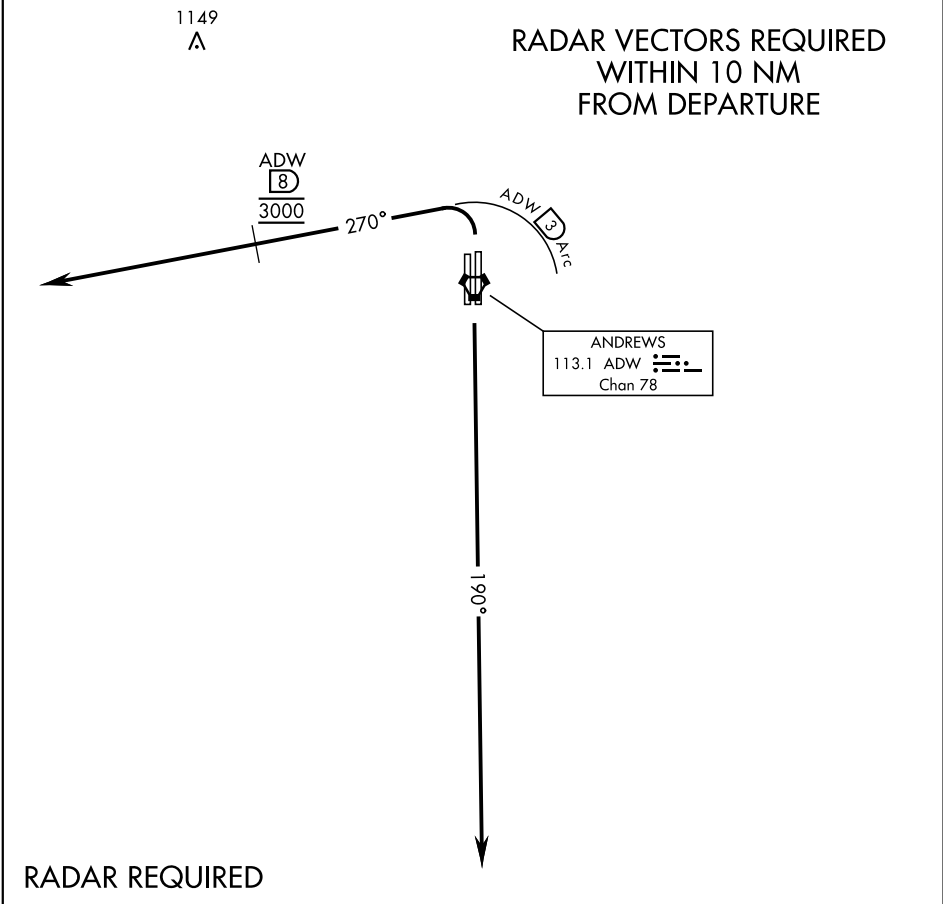


SL-561 [USAF]		Rwy	Knots	60	120	180	240	300	360
		1L/R	V/V(fpm)	380	760	1140	1520	1900	2280

ATIS 133.675 251.05  
CPDLC  
GND CON  
121.8 275.8  
ANDREWS TOWER  
118.4 349.0  
POTOMAC TRACON DEP CON  
118.95 257.2

ATC Climb Rate to 3000  
  
If unable to make published climb gradient  
advise ATC prior to departure.



DEPARTURE ROUTE DESCRIPTION
<u>TAKE-OFF RWY 1L/1R:</u> Turn left climb on heading 270° within 3 DME of ADW VORTAC, cross ADW 8 DME at 3000. Expect radar vectors.
<u>TAKE-OFF RWY 19R/19L:</u> Climb on heading 190° to 3000. Expect radar vectors to the west.

NE-3, 03 DEC 2020 to 31 DEC 2020

NE-3, 03 DEC 2020 to 31 DEC 2020