

ILS or LOC RWY 19L

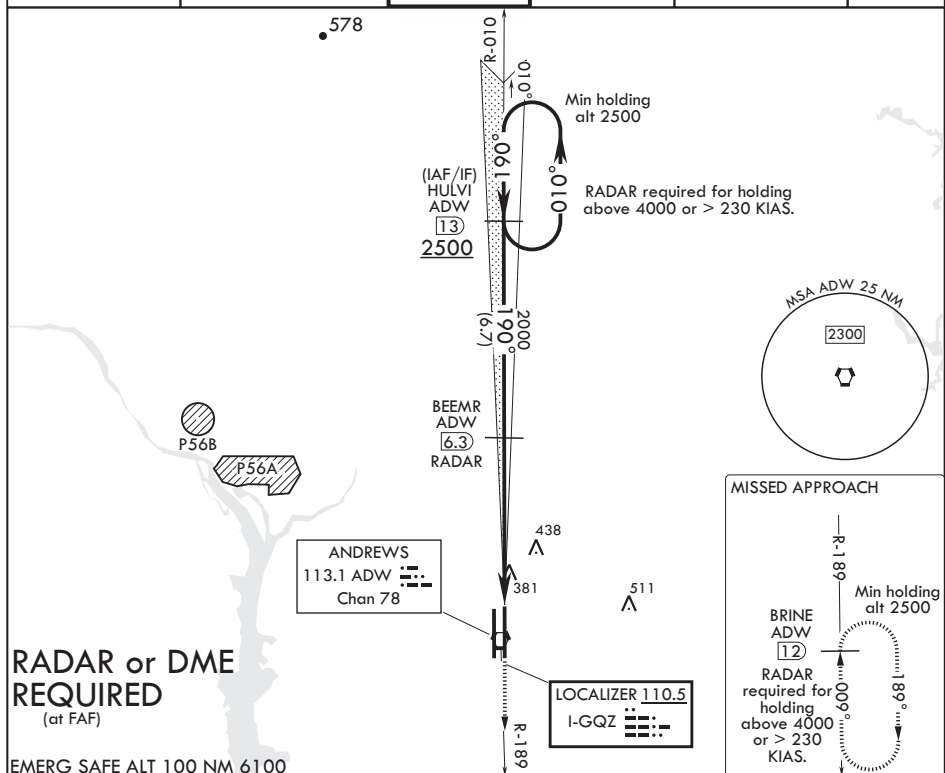
LOC I-GQZ <u>110.5</u>	APCH CRS 190°	Rwy Idg 9756 TDZE 279 Arpt Elev 280
----------------------------------	-------------------------	--

AL-561 (USAF)

JOINT BASE ANDREWS (KADW)

<p>T * When ALS inop, increase RVR to 40, vis to 3/4. ** When ALS inop, increase CAT AB RVR to 55, vis to 1 mile; CAT CDE RVR to 60, vis to 1 1/8 mile. *** Circling not authorized W of Rwy 1L-19R.</p>	<p>ALS-F-1</p> 	<p>MISSED APPROACH: Climb to 2500 via ADW R-189 to BRINE/ADW 12 DME and hold.</p>
--	--	---

ATIS 133.675 251.05	POTOMAC APP CON 128.0 335.5	TOWER 118.4 349.0	GND CON 121.8 275.8	CLNC DEL 127.55 285.475	CPDLC
------------------------	--------------------------------	----------------------	------------------------	----------------------------	-------



NE-3, 03 DEC 2020 to 31 DEC 2020

Category	A	B	C	D	E
S-ILS 19L*	479/24		200 (200-1/2)		
S-LOC 19L**	680/24	401 (400-1/2)	680/40	401 (400-3/4)	
CIRCLING***	780-1 500 (500-1)		780-1 1/2 500 (500-1 1/2)	840-2 560 (600-2)	