

## ILS or LOC RWY 1R

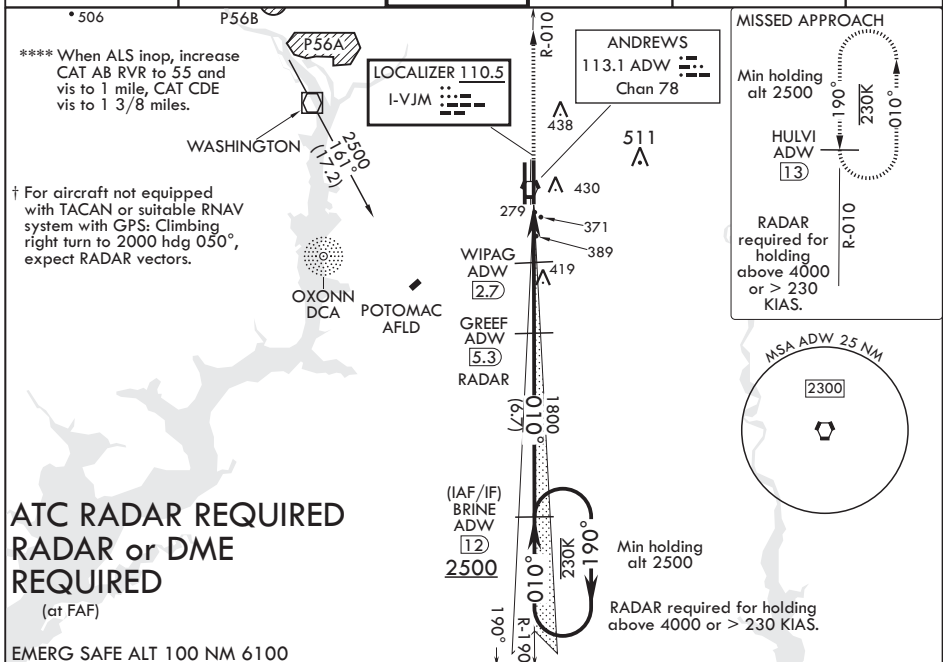
LOC I-VJM <b><u>110.5</u></b>	APCH CRS <b>010°</b>	Rwy Idg <b>9756</b> TDZE <b>265</b> Arpt Elev <b>280</b>
----------------------------------	-------------------------	--

AL-561 (USAF)

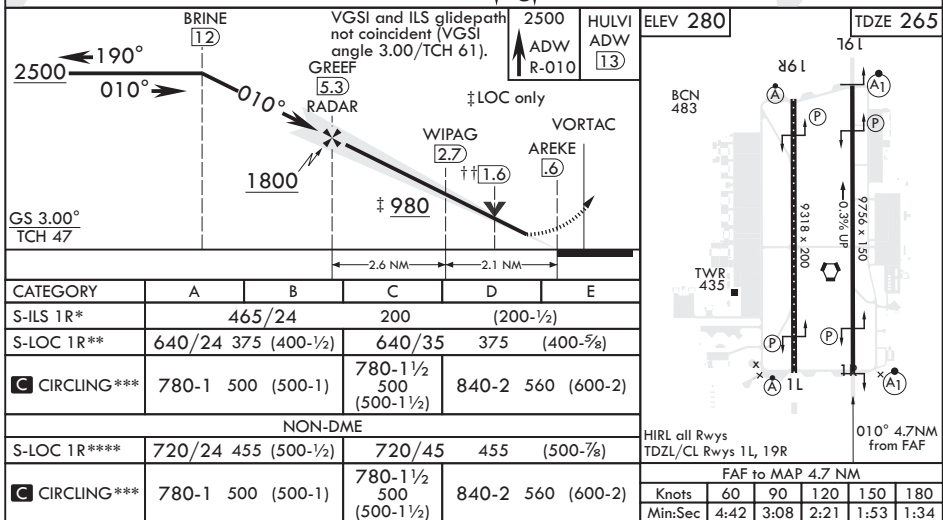
JOINT BASE ANDREWS (KADW)

<p><b>V</b> * When ALS inop, increase RVR to 40, vis to 3/4 mile. RVR 18 authorized with use of Flight Director System or Autopilot System or Heads-Up-Display to DA.</p> <p>** When ALS inop, increase RVR to 55, vis to 1 mile.</p> <p>*** Circling not authorized W of Rwy 1L-19R.</p>	<p><b>ALSF-1</b> † MISSED APPROACH: Climb to 2500 via ADW VORTAC R-010 to HULVI/ADW 13 DME and hold.</p>
---	--

ATIS 133.675 251.05	POTOMAC APP CON 128.0 335.5	TOWER 118.4 349.0	GND CON 121.8 275.8	CLNC DEL 127.55 285.475	CPDLC
------------------------	--------------------------------	----------------------	------------------------	----------------------------	-------



EMERG SAFE ALT 100 NM 6100



CAMP SPRINGS, MARYLAND

38°49'N - 76°52'W

JOINT BASE ANDREWS (KADW)

## ILS or LOC RWY 1R

Orig 15AUG19

NE-3, 03 DEC 2020 to 31 DEC 2020

NE-3, 03 DEC 2020 to 31 DEC 2020