

## RNAV (GPS) RWY 19L

WAAS CH <b>52203</b> W19A	APCH CRS <b>190°</b>	Rwy Idg <b>9756</b> TDZE <b>279</b> Arpt Elev <b>280</b>
---------------------------------	-------------------------	--

AL-561 (USAF)

JOINT BASE ANDREWS (KADW)

**T** \* When ALS inop, increase RVR to 40, vis to 3/4 mile.  
 \*\* When ALS inop, increase RVR to 60, vis to 1 1/8 miles.  
 \*\*\* When ALS inop, increase CAT AB RVR to 55, vis to 1 mile;  
 CAT CDE RVR to 60, vis to 1 1/8 miles.

ALSF-1

**MISSED APPROACH:** Climb to 2500 direct BRINE and hold.

ATIS 133.675 251.05	POTOMAC APP CON 128.0 335.5	TOWER 118.4 349.0	GND CON 121.8 275.8	CLNC DEL 127.55 285.475	CPDLC
------------------------	--------------------------------	----------------------	------------------------	----------------------------	-------

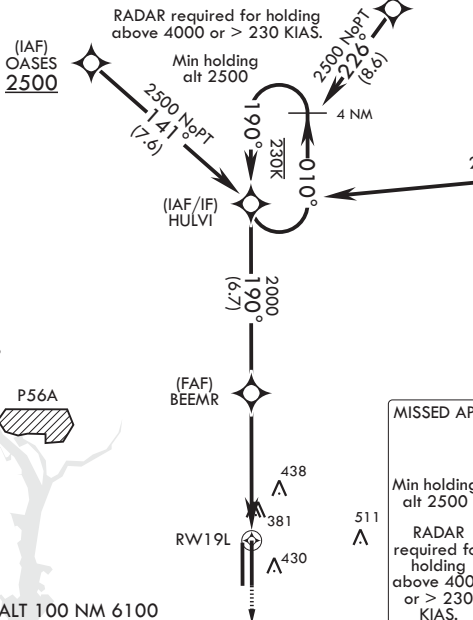
634

\*\*\*\* Circling not authorized  
W of Rwy 1L-19R.

### Visibility reduction by helicopters NA.

DME/DME RNP-0.3 NA

For uncompensated  
Baro-VNAV systems,  
Procedure NA below -15°C  
(5°F) or above 54°C (130°F).



EMERG SAFE ALT 100 NM 6100

#### MISSED APPROACH

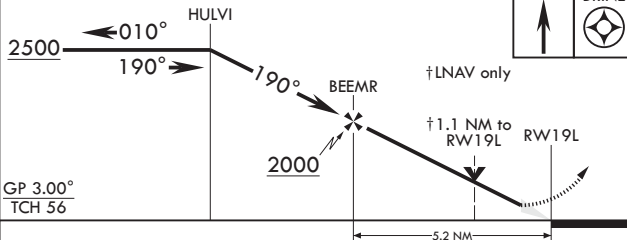
BRINE

Min holding  
alt 2500

RADAR  
required for  
holding  
above 4000  
or > 230  
KIAS.

MSA RVT 72 25 NM

3600



GP 3.00°

TCH 56

CATEGORY	A	B	C	D	E
LPV DA*	479/24		200	(200-½)	
LNAV/VNAV DA**	680/40		401	(400-¾)	
LNAV MDA***	680/24	401 (400-½)	680/40	401	(400-¾)
<b>C</b> CIRCLING****	780-1	500 (500-1)	780-1½ 500 (500-1½)	840-2	560 (600-2)

ELEV 280		TDZE 279
----------	--	----------

190° to RW19L 279

761  $\Delta$

483

100

0.

931	% D	9756	T
-----	-----	------	---

3 × 2

435



A diagram showing a horizontal beam of light entering from the left, passing through a lens, reflecting off a mirror, and exiting to the right. The beam is labeled with 'X' at the entry and exit points, and '1L' in the center.

HIRL all Rwys   

CAMP SPRINGS, MARYLAND

38°49'N - 76°52'W

JOINT BASE ANDREWS (KADW)

Orig 15AUG19

## RNAV (GPS) RWY 19L

NE-3, 03 DEC 2020 to 31 DEC 2020