

CAMP SPRINGS, MARYLAND

RNAV (GPS) RWY 19R

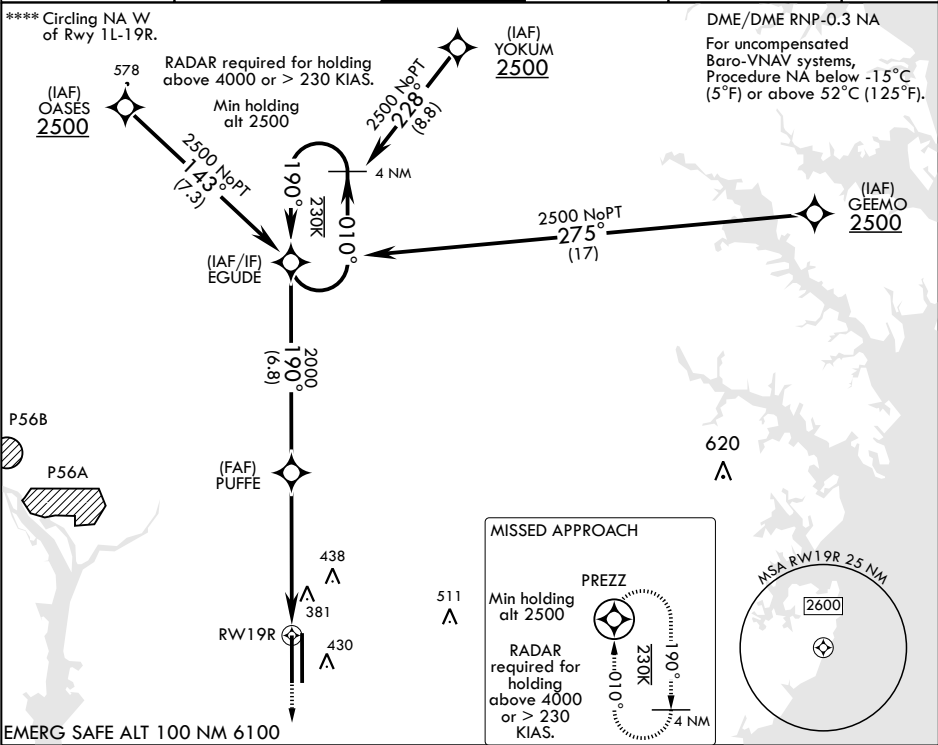
WAAS CH 52204 W19B	APCH CRS 190°	Rwy ldg 9318 TDZE 274 Arprt Elev 280
--------------------------	------------------	--

AL-561 (USAF)

JOINT BASE ANDREWS (KADW)

<p>⚠ * When ALS inop, increase RVR to 40, vis to 3/4. When TDZ/CL lights inop, increase RVR to 24. ** When ALS inop, increase vis to 1 1/4 miles. *** When ALS inop, increase CAT A8 RVR to 55, vis to 1 mile; CAT CDE vis to 1 1/4 miles.</p>	ALSF-2	MISSED APPROACH: Climb to 2500 direct PREZZ and hold.
--	--------	---

ATIS 133.675 251.05	POTOMAC APP CON 128.0 335.5	TOWER 118.4 349.0	GND CON 121.8 275.8	CLNC DEL 127.55 285.475	CPDLC
------------------------	--------------------------------	----------------------	------------------------	----------------------------	-------



EGUDE		VGSi and RNAV glidepath not coincident (VGSi angle 3.00°/TCH 70.62).		2500	PREZZ	ELEV 280	TDZE 274
2500		190°		190°		190° to RWY 19R	
GP 3.00° TCH 55		PUFFE		190°		161	
		2000		1.1 NM to RWY 19R		0.3% DOWN	
		5.2 NM		RWY 19R		9750 x 150	
CATEGORY		A	B	C	D	E	
LPV DA*		474/18		200		(200-1/2)	
LNAV/VNAV DA**		697/40		423		(500-3/4)	
LNAV MDA***		700/24 426 (500-1/2)		700/40		426 (500-3/4)	
CIRCLING****		780-1 500 (500-1)		780-1 1/2 500 (500-1 1/2)		840-2 560 (600-2)	

CAMP SPRINGS, MARYLAND

38°49'N - 76°52'W

JOINT BASE ANDREWS (KADW)

Orig 15AUG19
TERPS

RNAV (GPS) RWY 19R

NE-3, 03 DEC 2020 to 31 DEC 2020

NE-3, 03 DEC 2020 to 31 DEC 2020