

CAMP SPRINGS, MARYLAND

RNAV (GPS) RWY 1L

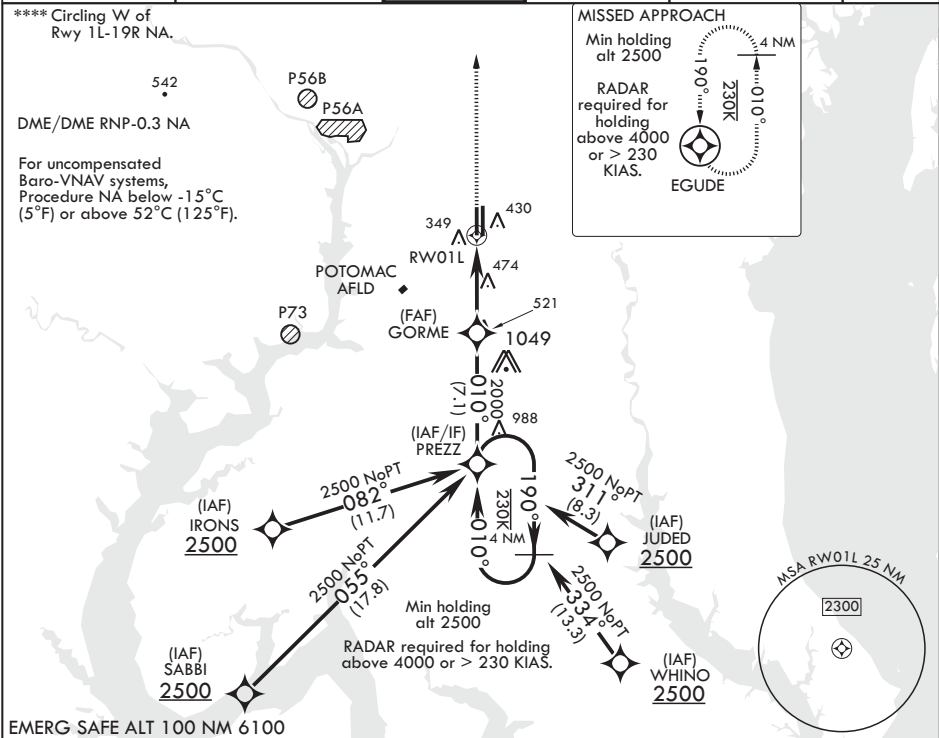
WAAS CH 52205 W01A	APCH CRS 010°	Rwy ldg TDZE Arpt Elev	9318 261 280
--------------------------	------------------	------------------------------	--------------------

AL-561 (USAF)

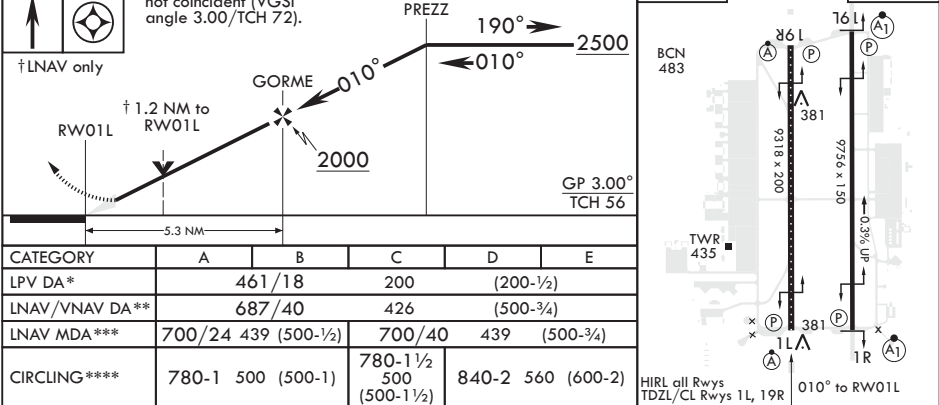
JOINT BASE ANDREWS (KADW)

<p>▼ * When ALS inop, increase RVR to 40, vis to ¾. When TDZ/CL lights inop, increase RVR to 24. ** When ALS inop increase vis to 1 1/4 miles. *** When ALS inop increase CAT AB RVR to 55, vis to 1 mile; CAT CDE vis to 1 1/4 miles.</p>	ALS-F-2 	MISSED APPROACH: Climb to 2500 direct EGUDE and hold.
--	-------------	---

ATIS 133.675 251.05	POTOMAC APP CON 128.0 335.5	TOWER 118.4 349.0	GND CON 121.8 275.8	CLNC DEL 127.55 285.475	CPDLC
------------------------	--------------------------------	----------------------	------------------------	----------------------------	-------



EMERG SAFE ALT 100 NM 6100	ELEV 280	TDZE 261
----------------------------	----------	----------



CAMP SPRINGS, MARYLAND

38°49'N - 76°52'W

JOINT BASE ANDREWS (KADW)

Amdt 2 15AUG19
TERPS

RNAV (GPS) RWY 1L

NE-3, 03 DEC 2020 to 31 DEC 2020

NE-3, 03 DEC 2020 to 31 DEC 2020