

CAMP SPRINGS, MARYLAND

RNAV (GPS) RWY 1R

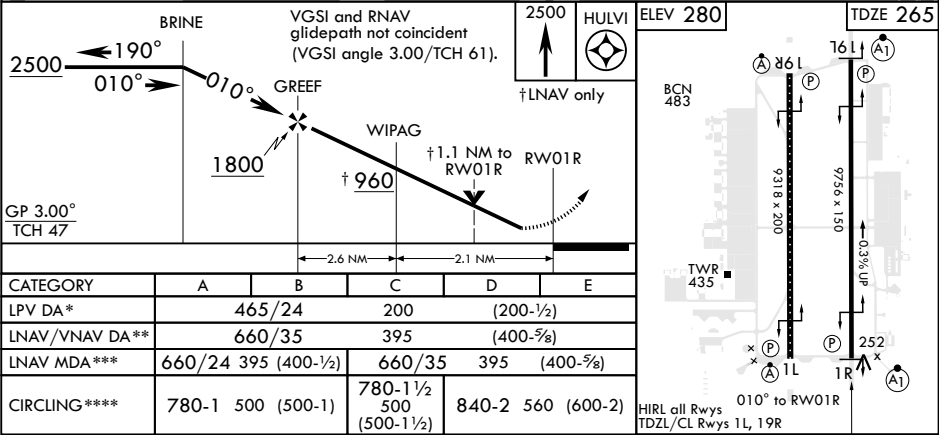
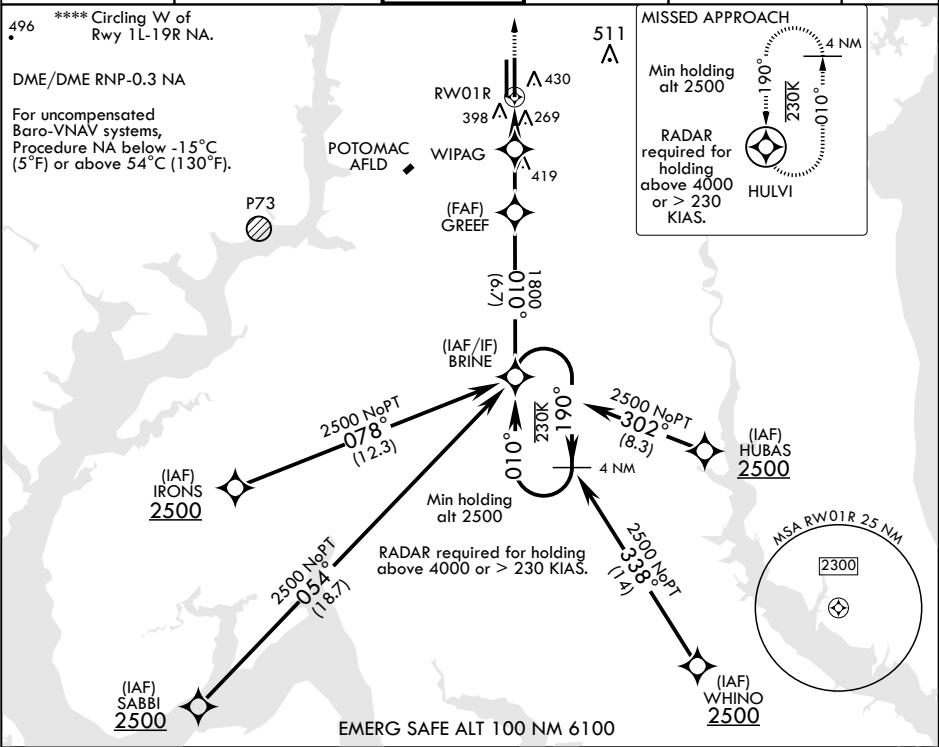
WAAS CH 52206 W01B	APCH CRS 010°	Rwy ldg TDZE Arpt Elev	9756 265 280
--------------------------	------------------	------------------------------	--------------------

AL-561 (USAF)

JOINT BASE ANDREWS (KADW)

<b>⚠</b> * When ALS inop increase RVR to 40, vis to 3/4 mile. ** When ALS inop, increase RVR to 60, vis to 1 1/8 miles. *** When ALS inop, increase CAT A/B RVR to 55, vis to 1 mile; CAT C/D RVR to 60, vis to 1 1/8 miles.	ALSF-1 	MISSED APPROACH: Climb to 2500 direct HULVI and hold.
---	---	---

ATIS 133.675 251.05	POTOMAC APP CON 128.0 335.5	TOWER 118.4 349.0	GND CON 121.8 275.8	CLNC DEL 127.55 285.475	CPDLC
------------------------	--------------------------------	----------------------	------------------------	----------------------------	-------



CAMP SPRINGS, MARYLAND

38°49'N - 76°52'W

JOINT BASE ANDREWS (KADW)

Amdt 2 10OCT19  
TERPS

RNAV (GPS) RWY 1R

NE-3, 03 DEC 2020 to 31 DEC 2020

NE-3, 03 DEC 2020 to 31 DEC 2020