

CAMP SPRINGS, MARYLAND

RNAV (GPS)-A

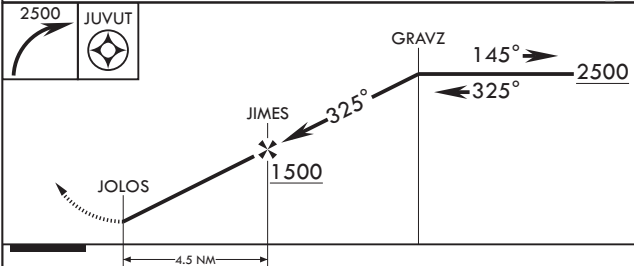
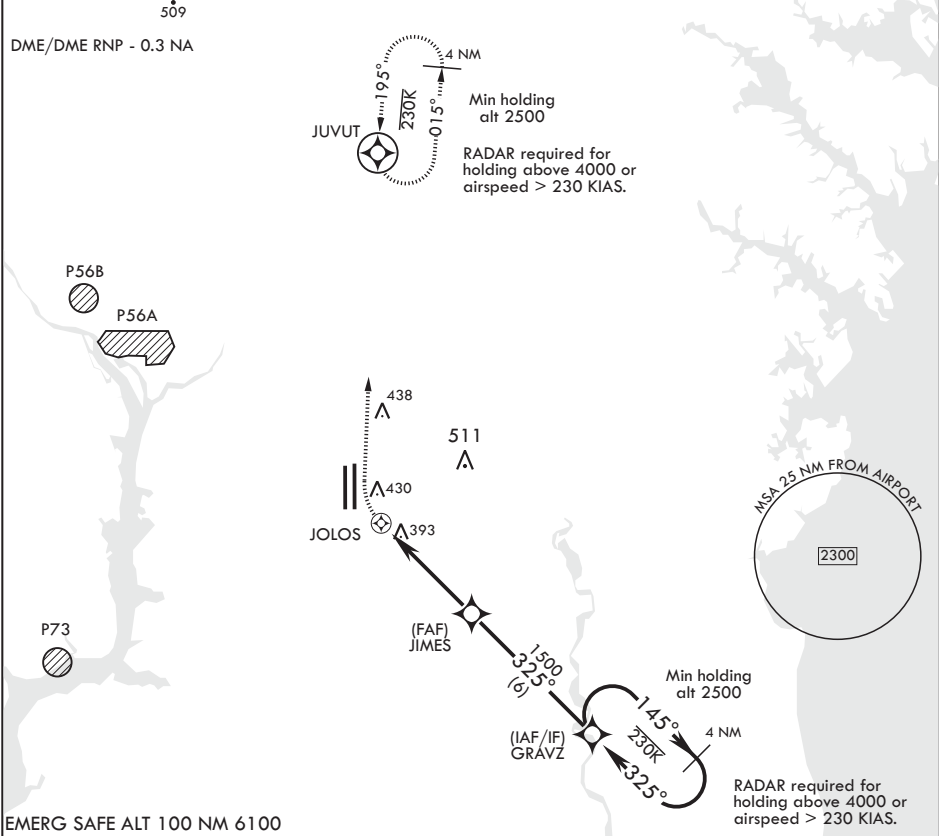
APCH CRS	Rwy Idg	N/A
325°	TDZE	N/A
	Arpt Elev	280

AL-561 (USAF)

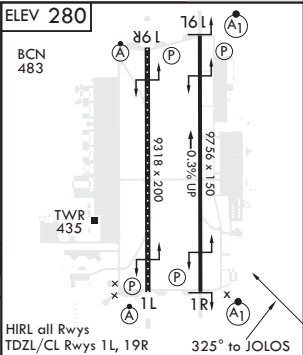
JOINT BASE ANDREWS (KADW)

V * Circling NA West of Rwy 1L-19R.	MISSED APPROACH: Climbing right turn to 2500 direct JUVUT and hold.
--	---

ATIS 133.675 251.05	POTOMAC APP CON 128.0 335.5	TOWER 118.4 349.0	GND CON 121.8 275.8	CLNC DEL 127.55 285.475	CPDLC
------------------------	--------------------------------	----------------------	------------------------	----------------------------	-------



CATEGORY	A	B	C	D	E
C CIRCLING*	780-1 1/4 501 (600-1 1/4)		780-1 1/2 501 (600-1 1/2)	840-2 561 (600-2)	



CAMP SPRINGS, MARYLAND

38°49'N - 76°52'W

JOINT BASE ANDREWS (KADW)

RNAV (GPS)-A

Orig 02MAR17
TERPS

NE-3, 03 DEC 2020 to 31 DEC 2020

NE-3, 03 DEC 2020 to 31 DEC 2020