

CAMP SPRINGS, MARYLAND

TACAN RWY 19R

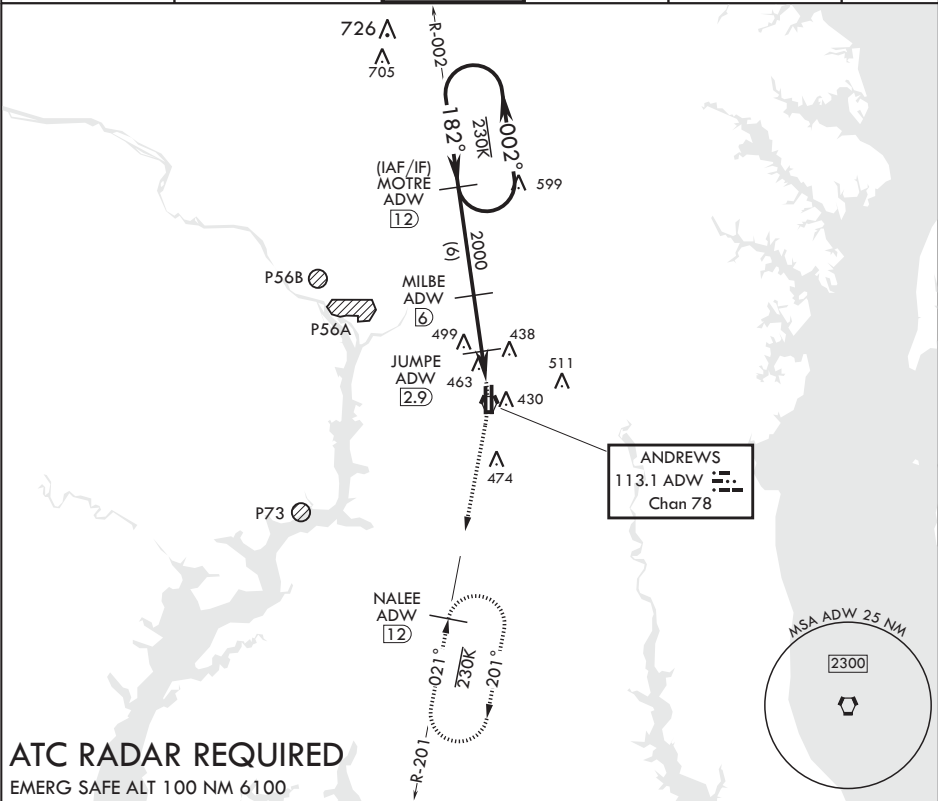
VORTAC ADW 113.1 Chan 78	APCH CRS 182°	Rwy Idg TDZE Arpt Elev	9318 274 280
--------------------------------	------------------	------------------------------	--------------------

AL-561 (USAF)

JOINT BASE ANDREWS (KADW)

<p>▼ * When ALS inop, increase CAT AB RVR to 55 and vis to 1 mile, CAT CDE vis to 1 3/8 miles. ** Circling not authorized W of Rwy 1L-19R.</p>	ALSF-2	MISSED APPROACH: Climbing to 2500, intercept ADW VORTAC R-201 to NALEE and hold.
--	--------	--

ATIS 133.675 251.05	POTOMAC APP CON 128.0 335.5	TOWER 118.4 349.0	GND CON 121.8 275.8	CLNC DEL 127.55 285.475	CPDLC
------------------------	--------------------------------	----------------------	------------------------	----------------------------	-------



ATC RADAR REQUIRED
EMERG SAFE ALT 100 NM 6100

MOTRE R-002 12		2500 ADW R-201		NALEE ADW 12	ELEV 280	TDZE 274
2500 ← 002°		182° → 182°		182° 5NM from FAF		
↑ MILBE to MAP		JUMPE 2.9		BCN 483		
↑ 3.11° > TCH 71		2000		TWR 435		
3.1 NM		1.7 NM		16L 11L 16R 11R		
CATEGORY		A		B		
S-19R*		740/24 466 (500-1/2)		740/50 466 (500-1)		
C CIRCLING**		780-1 501 (600-1)		780-1 1/2 501 (600-1 1/2)		
				840-2 561 (600-2)		
				HIRL all Rwy TDZ/CL Rwy 1L, 19R		

CAMP SPRINGS, MARYLAND

38°49'N - 76°52'W

JOINT BASE ANDREWS (KADW)

Amdt 1 02MAR17

TACAN RWY 19R

NE-3, 03 DEC 2020 to 31 DEC 2020

NE-3, 03 DEC 2020 to 31 DEC 2020