

CAMP SPRINGS, MARYLAND

TACAN RWY 1L

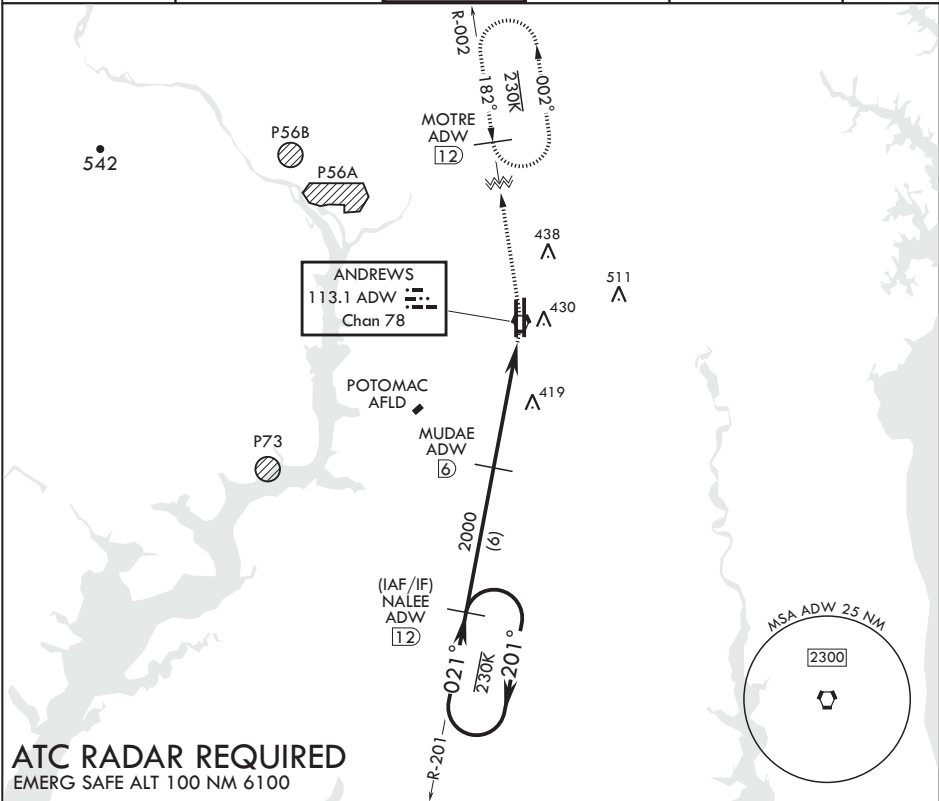
VORTAC ADW 113.1 Chan 78	APCH CRS 021°	Rwy Idg TDZE Arpt Elev	9318 261 280
--------------------------------	------------------	------------------------------	--------------------

AL-561 (USAF)

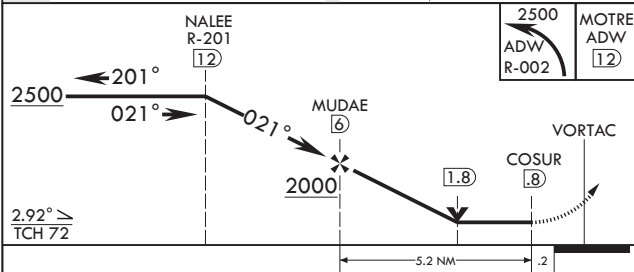
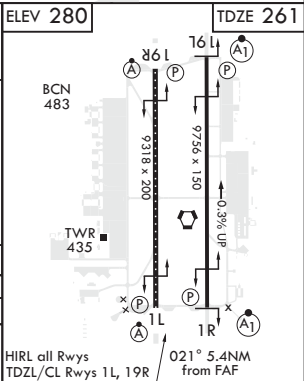
JOINT BASE ANDREWS (KADW)

<b>⚠</b> * When ALS inop, increase CAT AB RVR to 55, and vis to 1 mile, CAT CDE vis to 1 3/8 miles. ** Circling not authorized W of Rwy 1L-19R.	ALSF-2 	MISSED APPROACH: Climb to 2500 via ADW VORTAC R-002 to MOTRE/ADW 12 DME and hold.
--	---	---

ATIS 133.675 251.05	POTOMAC APP CON 128.0 335.5	TOWER 118.4 349.0	GND CON 121.8 275.8	CLNC DEL 127.55 285.475	CPDLC
------------------------	--------------------------------	----------------------	------------------------	----------------------------	-------



**ATC RADAR REQUIRED**  
EMERG SAFE ALT 100 NM 6100

					ELEV 280 MOTRE ADW 12 2500 ADW R-002	ELEV 280 TDZE 261	
CATEGORY	A	B	C	D	E		
S-1L*	720/24	459 (500-1/2)	720/45	459	(500-3/8)		
<b>C</b> CIRCLING**	780-1	501 (600-1)	780-1 1/2 501 (600-1 1/2)	840-2	561 (600-2)		

CAMP SPRINGS, MARYLAND

38°49'N - 76°52'W

JOINT BASE ANDREWS (KADW)

Amdt 1 02MAR17

TACAN RWY 1L

NE-3, 03 DEC 2020 to 31 DEC 2020

NE-3, 03 DEC 2020 to 31 DEC 2020