

CAMP SPRINGS, MARYLAND

TACAN RWY 1R

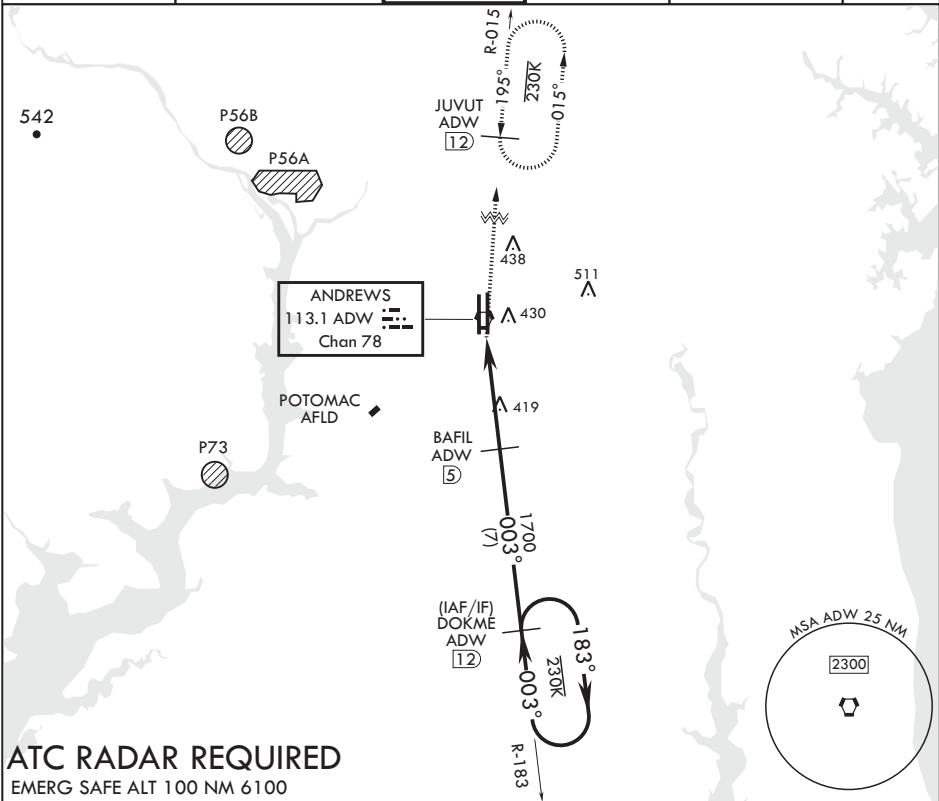
VORTAC ADW 113.1 Chan 78	APCH CRS 003°	Rwy Idg TDZE Arpt Elev	9756 265 280
--------------------------------	------------------	------------------------------	--------------------

AL-561 (USAF)

JOINT BASE ANDREWS (KADW)

<p>⚠ * When ALS inop, increase CAT AB RVR to 55 and vis to 1 mile, CAT CDE vis to 1 3/8 miles. ** Circling not authorized W of Rwy 1L-19R.</p>	<p>ALSIF-1 </p>	<p>MISSED APPROACH: Climb to 2500 via ADW VORTAC R-015 to JUVUT and hold.</p>
---	--	---

ATIS 133.675 251.05	POTOMAC APP CON 128.0 335.5	TOWER 118.4 349.0	GND CON 121.8 275.8	CLNC DEL 127.55 285.475	CPDLC
------------------------	--------------------------------	----------------------	------------------------	----------------------------	-------



ATC RADAR REQUIRED

EMERG SAFE ALT 100 NM 6100

2500

ADW

R-015

JUVUT

ADW

12

2500

DOKME

R-183

12

ELEV 280

TDZE 265

VORTAC

MOPDE

7

1.9

1700

5

BAFIL

183°

003°

003°

2500

≤ 2.95°

TCH 61

.1

4.3 NM

BCN 483

TWR 435

161L

9318 x 200

9756 x 150

0.3% UP

161L

1L

1R

003° 4.4NM from FAF

CATEGORY	A	B	C	D	E
S-1R*	720/24 455 (500-½)	720/45 455 (500-¾)	780-1½ 501 (600-1½)	840-2 561 (600-2)	
CIRCLING**	780-1 501 (600-1)				

HIRL all Rwys

TDZL/CL Rwys 1L, 19R

CAMP SPRINGS, MARYLAND

38°49'N - 76°52'W

JOINT BASE ANDREWS (KADW)

Amdt 2 02MAR17

TACAN RWY 1R

NE-3, 03 DEC 2020 to 31 DEC 2020

NE-3, 03 DEC 2020 to 31 DEC 2020