

CAMP SPRINGS, MARYLAND

TACAN-A

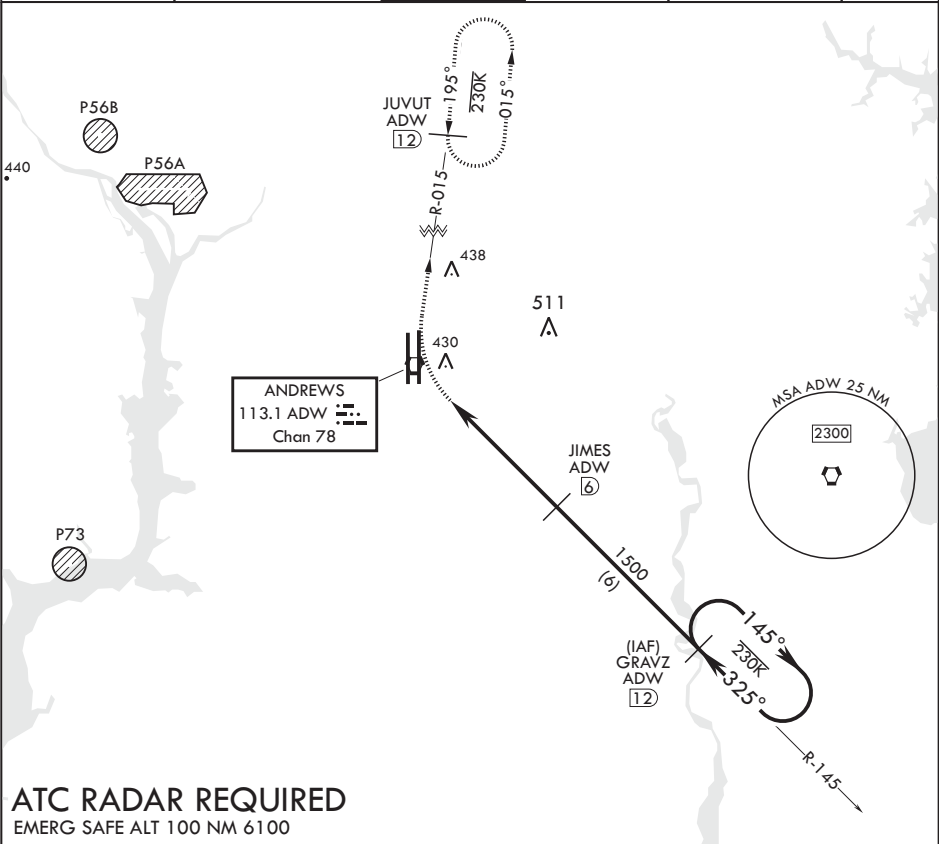
VORTAC ADW 113.1 Chan 78	APCH CRS 325°	Rwy Idg TDZE Arprt Elev	N/A N/A 280
--------------------------------	------------------	-------------------------------	-------------------

AL-561 (USAF)

JOINT BASE ANDREWS (KADW)

⚠ * Circling not authorized west of Rwy 1L-19R.	MISSED APPROACH: Climbing right turn to 2500 via ADW R-015 to JUVUT and hold.
---	---

ATIS 133.675 251.05	POTOMAC APP CON 128.0 335.5	TOWER 118.4 349.0	GND CON 121.8 275.8	CLNC DEL 127.55 285.475	CPDLC
------------------------	--------------------------------	----------------------	------------------------	----------------------------	-------



ATC RADAR REQUIRED

EMERG SAFE ALT 100 NM 6100

2500 ADW R-015

JUVUT ADW 12

GRAVZ 12

145°

325°

2500

JAMES 6

325°

1500

VORTAC

JOLOS 1.5

4.5 NM

CATEGORY	A	B	C	D	E
CIRCLING*	780-1¼ 500 (500-1¼)	780-1½ 500 (500-1½)	840-2 560 (600-2)		

ELEV 280

BCN 483

TWR 435

19L

19R

1L

1R

325° 5.6NM from FAF

0.3% UP

97.56 x 1.50

9.318 x 200

HIRL all Rwys

TDZL/CL Rwys 1L, 19R

CAMP SPRINGS, MARYLAND

38°49'N - 76°52'W

JOINT BASE ANDREWS (KADW)

Amdt 2 12OCT17

TACAN-A

NE-3, 03 DEC 2020 to 31 DEC 2020

NE-3, 03 DEC 2020 to 31 DEC 2020