

DOVER, DELAWARE

TACAN RWY 19

TACAN DOV Chan 37	APCH CRS 204°	Rwy ldg TDZE Arpt Elev	9602 23 29
----------------------	------------------	------------------------------	------------------

AL-562 (USAF)

DOVER AFB (KDOV)

▼ * When ALS inop, increase CAT AB RVR to 55 and vis to 1 mile, CAT CDE vis to 1 3/8 miles.

ALSF-1

MISSED APPROACH: Climb to 2000 via DOV TACAN R-194 to LERSE/DOV 6.9 DME and hold.

ATIS 127.825 273.5	APP CON 132.425 257.875	TOWER 126.35 279.625	GND CON 118.875 225.4	CLNC DEL 125.55 289.4
-----------------------	----------------------------	-------------------------	--------------------------	--------------------------

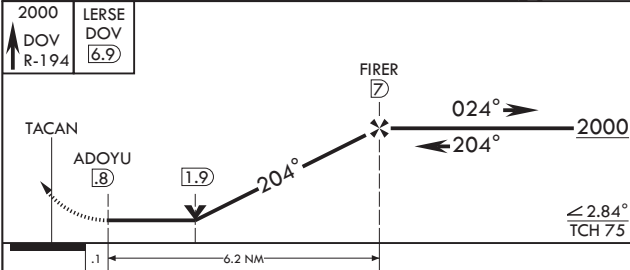
CAUTION: When Rwy 14 VGSi inop, circling to Rwy 14 NA at night

RADAR required for holding above 4000 or > 230 KIAS

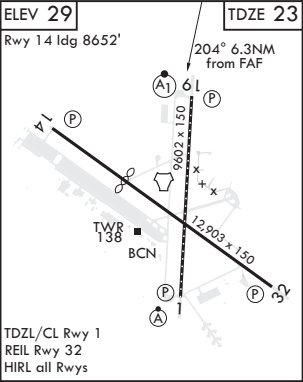
RADAR required for holding above 2000 or > 230 KIAS

RADAR required for holding above 4000 or > 230 KIAS

EMERG SAFE ALT 100 NM 4300



CATEGORY	A	B	C	D	E
S-19*	480/24	457 (500-1/2)	480/45	457	(500-3/4)
CIRCLING	500-1 471 (500-1)	540-1 511 (600-1)	580-1 1/2 551 (600-1 1/2)	620-2 591 (600-2)	1080-3 1051 (1100-3)



DOVER, DELAWARE
Amdt 2 05DEC19

39°08'N - 75°28'W

DOVER AFB (KDOV)

TACAN RWY 19

NE-3, 03 DEC 2020 to 31 DEC 2020

NE-3, 03 DEC 2020 to 31 DEC 2020