

LOC I-DAN 110.7	APP CRS 025°	Rwy Idg TDZE Apt Elev	5600 559 571
---------------------------	------------------------	-----------------------------	---

ILS or LOC RWY 2
DANVILLE RGNL (DAN)

⚠

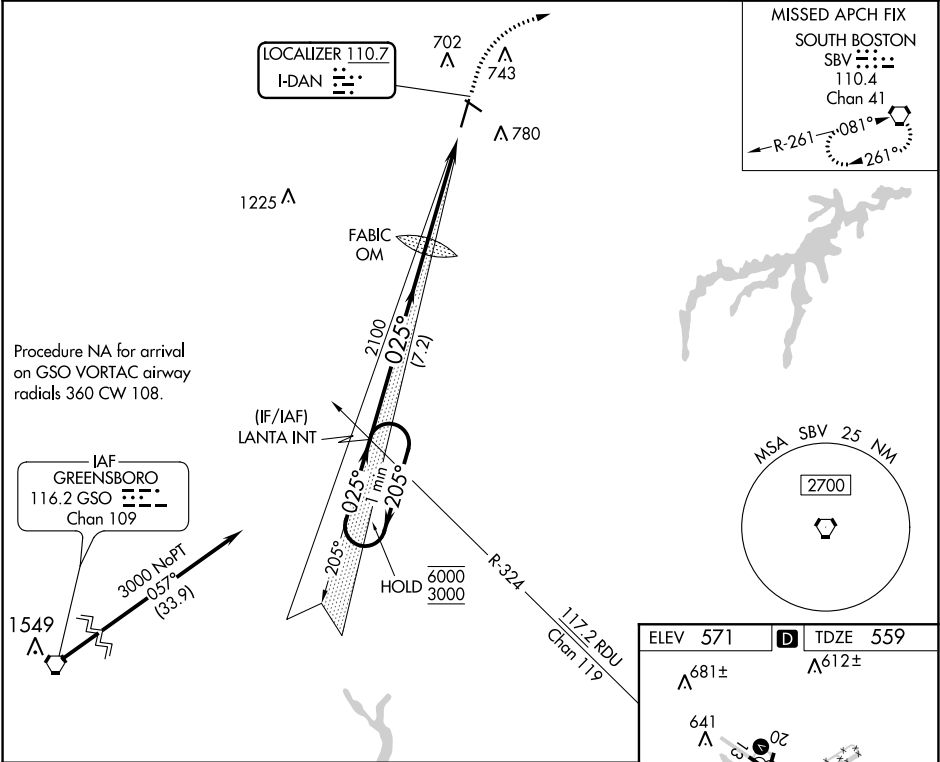
For inop ALS, increase S-LOC 2 Cat C/D visibility to 1½ SM.

MALSR

AS

MISSED APPROACH: Climb to 2000 then climbing right turn to 3000 direct SBV VORTAC and hold.

ASOS 128.125	WASHINGTON CENTER 124.05 307.0	UNICOM 123.05 (CTAF) 0
------------------------	--	----------------------------------



One Minute Holding Pattern

LANTA INT

FABIC OM

2000

3000

SBV

6000 ← 205°

3000 → 025°

025°

2019

2100

GS 3.00° TCH 54

7.2 NM

4.5 NM

CATEGORY	A	B	C	D
S-ILS 2	759-½ 200 (200-½)			
S-LOC 2	1020-½ 461 (500-½)		1020-1 461 (500-1)	
CIRCLING	1120-1 549 (600-1)		1120-1½ 549 (600-1½) 1200-2 629 (700-2)	

ELEV 571 **D** TDZE 559

681± A

612± A

641 A

623★

3010 X 100

1.1% UP

605 A

621± A

663± A

606± A

5900 X 100

0.5% UP

569± A

HIRL Rwy 2-20

MIRL Rwy 13-31

REIL Rws 13, 20 and 31

025° 4.5 NM from FAF

FAF to MAP 4.5 NM

Knots	60	90	120	150	180
Min:Sec	4:30	3:00	2:15	1:48	1:30

NE-3, 03 DEC 2020 to 31 DEC 2020

NE-3, 03 DEC 2020 to 31 DEC 2020