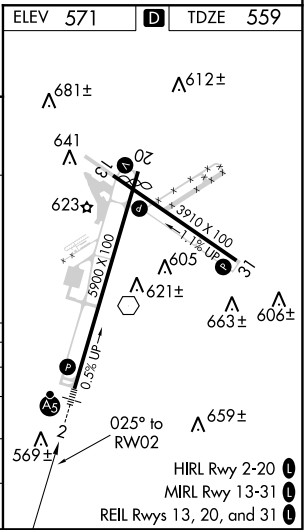
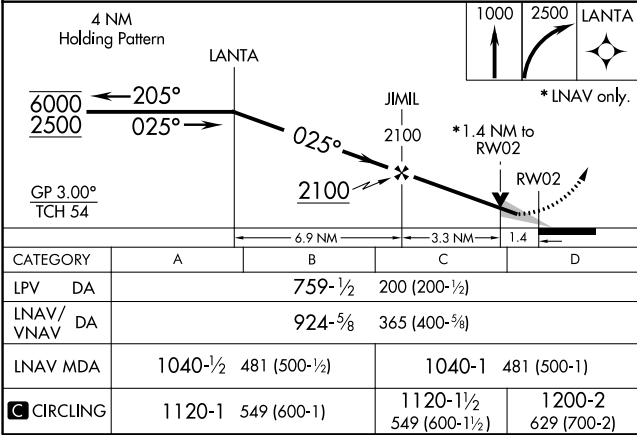
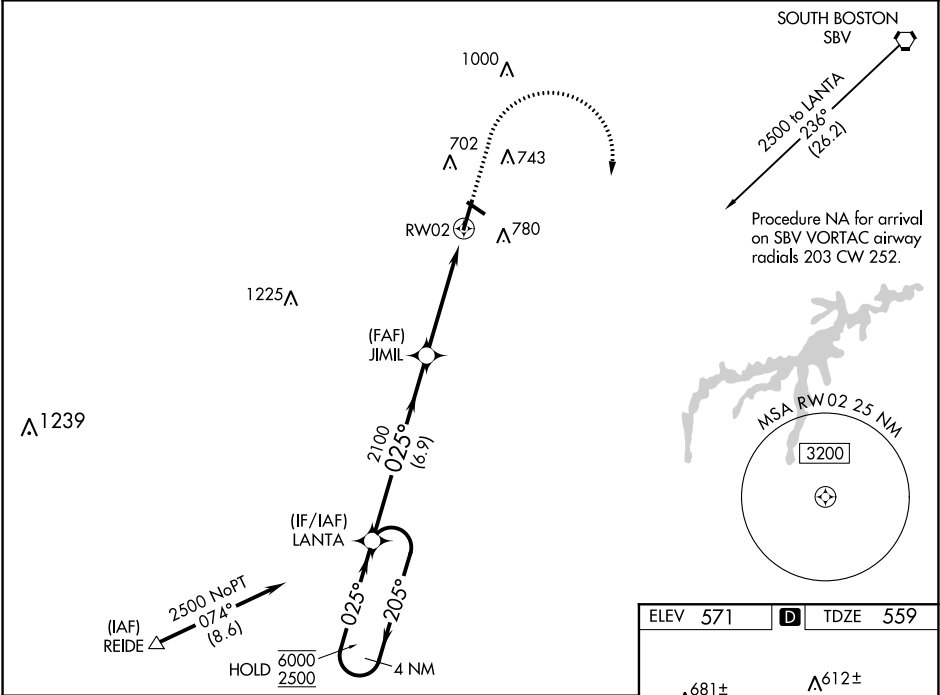


WAAS CH <b>42916</b> <b>W02A</b>	APP CRS <b>025°</b>	Rwy Idg TDZE <b>5600</b> <b>559</b> Apt Elev <b>571</b>
--	------------------------	--

RNAV (GPS) RWY 2  
DANVILLE RGNL (DAN)

RNP APCH.		MALSR	MISSED APPROACH: Climb to 1000 then climbing right turn to 2500 direct LANTA and hold.
<div><div><div></div><div></div></div><div>For uncompensated Baro-VNAV systems, LNAV/VNAV NA below -14°C or above 54°C. For inop ALS increase LNAV/VNAV all Cats visibility to 1 SM. Increase LNAV Cats C/D visibility to 1½ SM.</div></div>		<div><div><div></div><div></div></div><div>A5</div></div>	
ASOS 128.125	WASHINGTON CENTER 124.05 307.0	UNICOM 123.05 (CTAF) 0	



NE-3, 03 DEC 2020 to 31 DEC 2020

NE-3, 03 DEC 2020 to 31 DEC 2020