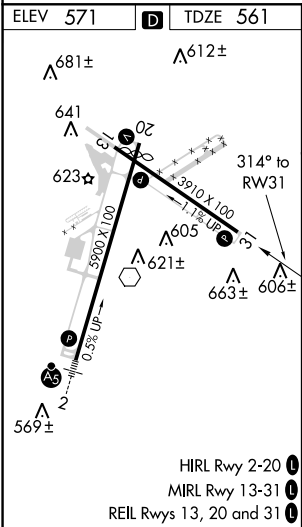
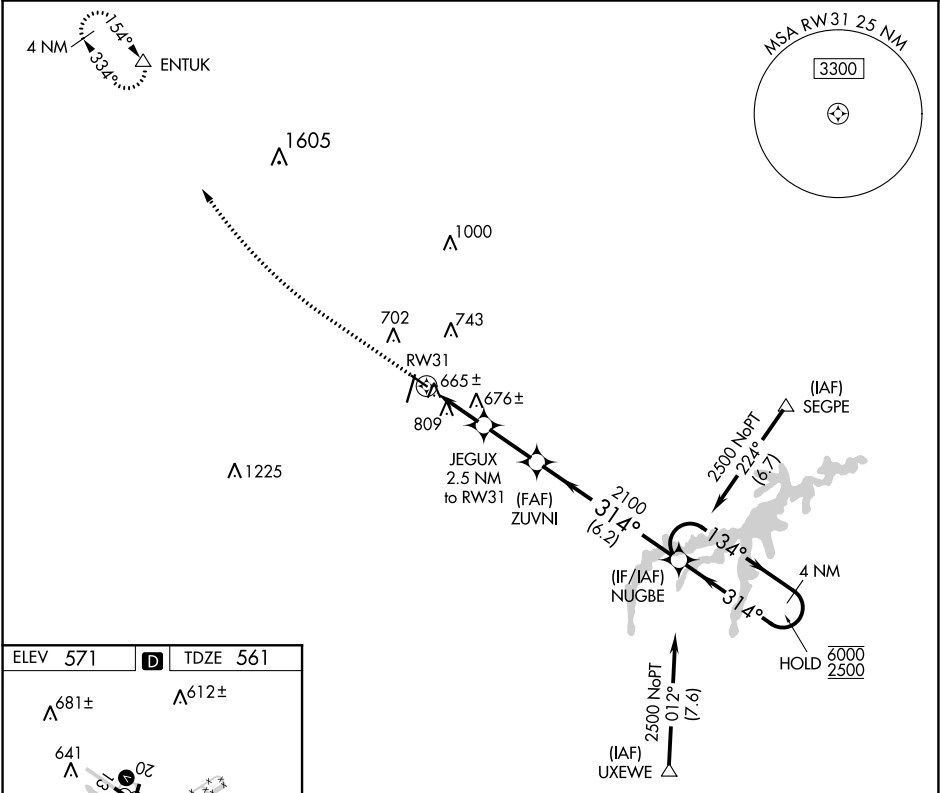


WAAS CH <b>93631</b> <b>W31A</b>	APP CRS <b>314°</b>	Rwy Idg TDZE <b>561</b> Apt Elev <b>571</b>	<b>3910</b>
--	------------------------	---	-------------

RNAV (GPS) RWY 31  
DANVILLE RGNL (DAN)

RNP APCH.	MISSED APPROACH: Climb to 1000 then climbing right turn to 3300 direct ENTUK and hold.
Rwy 31 helicopter visibility reduction below 3/4 SM NA.	

ASOS <b>128.125</b>	WASHINGTON CENTER <b>124.05 307.0</b>	UNICOM <b>123.05 (CTAF) 0</b>
------------------------	--	----------------------------------



1000	3300	ENTUK	Visual Segment - Obstacles.	NUGBE	4 NM Holding Pattern
RW31      JEGUX 2.5 NM to RW31      ZUVNI      NUGBE					
2.5 NM      2.3 NM      6.2 NM					
CATEGORY	A	B	C	D	
LP MDA	920-1 359 (400-1)			NA	
INAV MDA	1060-1 499 (500-1)			NA	

NE-3, 03 DEC 2020 to 31 DEC 2020

NE-3, 03 DEC 2020 to 31 DEC 2020