

WAAS CH <b>45534</b> <b>W28A</b>	APP CRS <b>281°</b>	Rwy Idg TDZE Apt Elev	<b>8005</b> <b>40</b> <b>40</b>
--	------------------------	-----------------------------	---------------------------------------

RNAV (GPS) RWY 28

Wallops Flight Facility (WAL)

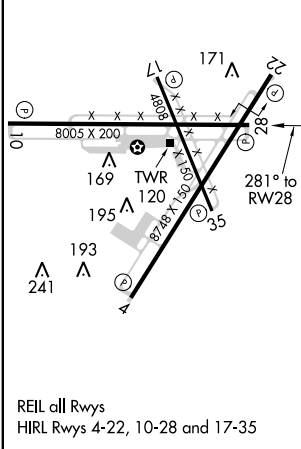
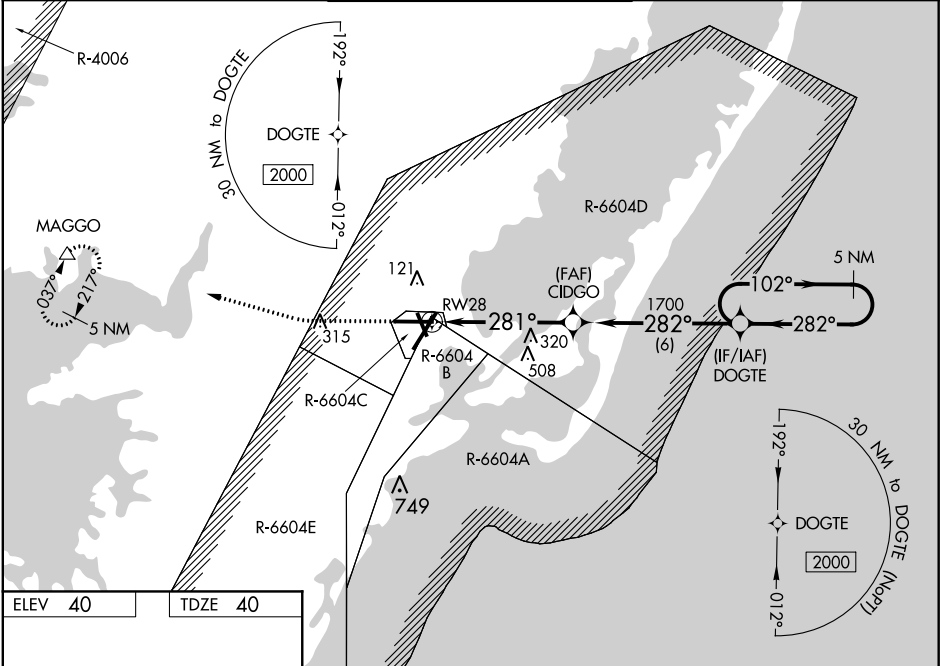
⚠

For uncompensated Baro-VNAV systems, LNAV/VNAV NA below -11°C (13°F) or above 54°C (130°F). DME/DME RNP-0.3 NA. When local altimeter setting not received, use Salisbury altimeter setting: increase LPV DA to 343 and all Cats visibility ¼ mile; increase LNAV/VNAV DA to 453 and all Cats visibility ¼ mile; increase all MDA 60 feet and LNAV Cats C/D and Circling Cat C visibility ¼ mile. Baro-VNAV and VDP NA when using Salisbury altimeter setting.

⚠

MISSED APPROACH: Climb to 600 then climbing right turn to 2000 direct MAGGO and hold.

ASOS <b>119.175</b>	PATUXENT APP CON ★ <b>127.95 314.0</b>	Wallops Tower ★ <b>126.5 (CTAF) 306.975 (CTAF)</b>	GND CON <b>127.875 269.325</b>	CLNC DEL <b>121.7</b>
------------------------	---	---	-----------------------------------	--------------------------



600 2000 MAGGO

VGSI and RNAV glidepath not coincident (VGSI Angle 3.00°/TCH 61).

\*LNAV only.

\*1.3 NM to RW28

CIDGO 1700

DOGTE 1700

5 NM Holding Pattern

GP 3.00° TCH 50

CATEGORY	A	B	C	D
LPV DA	290-¾ 250 (300-¾)			
LNAV/VNAV DA	400-1½ 360 (400-1½)			
LNAV MDA	520-1	480 (500-1)	520-1¾	480 (500-1¾)
CIRCLING	600-1	560 (600-1)	620-1½	860-2¾