

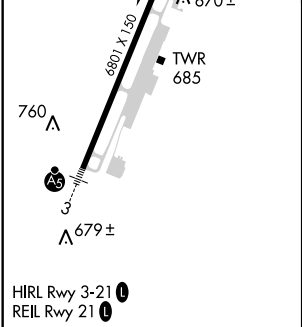
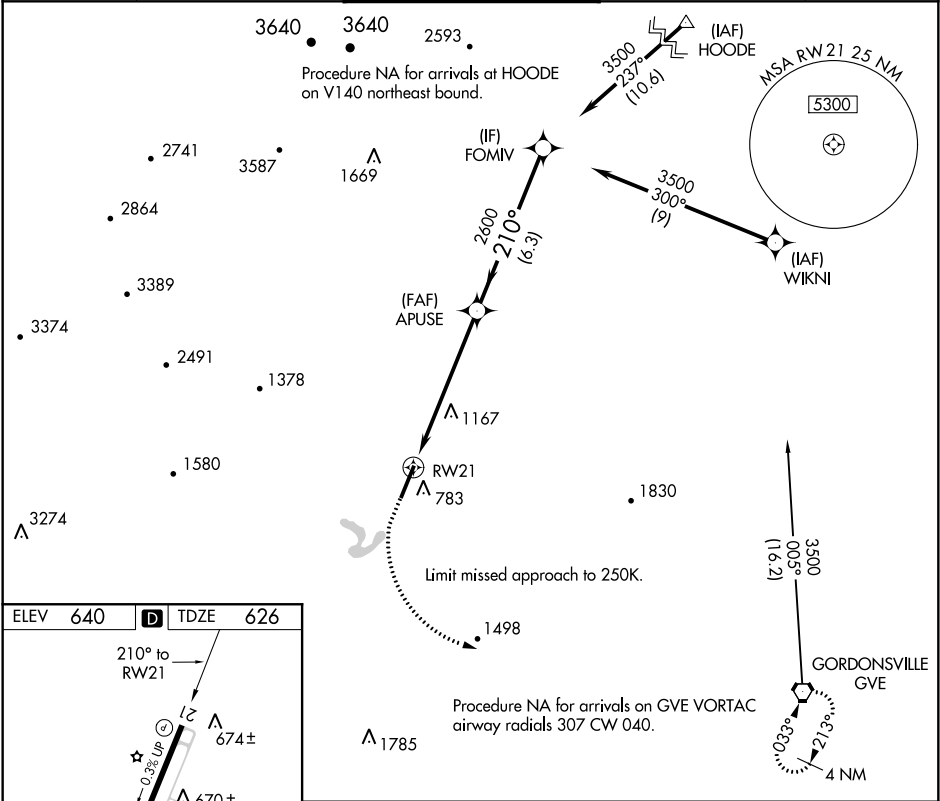
WAAS CH <b>45602</b> <b>W21B</b>	APP CRS <b>210°</b>	Rwy ldg TDZE <b>626</b> Apt Elev <b>640</b>
--	------------------------	---

RNAV (GPS) Z RWY 21

CHARLOTTESVILLE-ALBEMARLE (CHO)

RNP APCH.	Baro-VNAV NA when using Staunton/Waynesboro/Harrisonburg altimeter setting. For uncompensated Baro-VNAV systems, procedure NA below -16°C or above 54°C. When local altimeter setting not received, use Staunton/Waynesboro/Harrisonburg altimeter setting and increase all DA 130 feet and LPV visibility ½ mile.	MISSED APPROACH: Climb to 1100, then climbing left turn to 4000 direct GVE VORTAC and hold.
-----------	--	---

ATIS <b>118.425</b>	POTOMAC APP CON <b>132.85 323.125</b>	CHARLOTTESVILLE TOWER ★ <b>124.5 (CTAF) 0 338.275</b>	GND CON <b>121.9 338.275</b>	UNICOM <b>122.95</b>
------------------------	--	--	---------------------------------	-------------------------



1100	4000	GVE		
↑	↖	⬡		
RW21		APUSE 2600	210°	FOMIV 3500
		2600	GP 3.00° TCH 50	
		6.1 NM	6.3 NM	
CATEGORY	A	B	C	D
LPV DA	826-1 200 (200-1)			
LNAV/VNAV DA	1588-4 962 (1000-4)			