

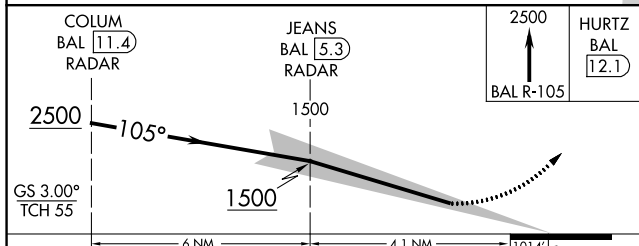
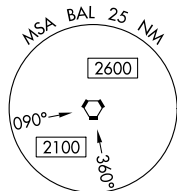
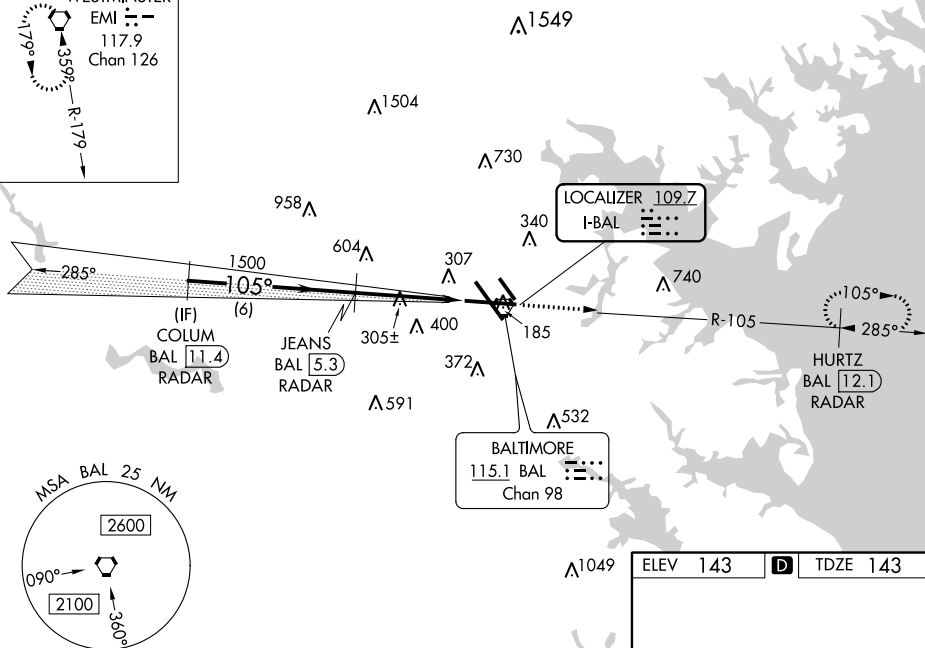
BALTIMORE/ ILS RWY 10 (CAT II & III)
WASHINGTON INTL THURGOOD MARSHALL (BWI)

MISSED APPROACH: Climb to 2500 on BAL VORTAC R-105 to HURTZ/BAL 12.1 DME/RADAR and hold.



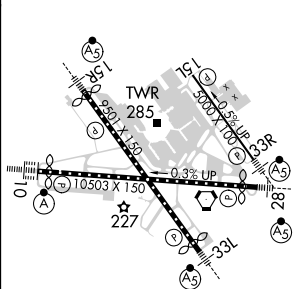
ALTERNATE MISSED
APCH FIX

WESTMINSTER
EMI
117.9
Chan 126
359°
R-179
179°



CATEGORY	A	B	C	D
S-ILS 10	CAT II RA 102/12 100 DA 243			
S-ILS 10	CAT III RVR 06			

CATEGORY II & III ILS - SPECIAL AIRCREW
& AIRCRAFT CERTIFICATION REQUIRED



TDZ/CL Rwy 10 and 33L
REIL Rwy 15L and 33R
HIRL all rwy