


ILS or LOC RWY 28
 THURGOOD MARSHALL (BWI)

T DME or radar required. For inoperative MALSR, increase S-LOC 28
A Cat C/D visibility to 1 $\frac{3}{8}$ mile, and increase ZIXUS fix S-LOC 28
 Cat C/D visibility to RVR 4500.
 **RVR 1800 authorized with the use of FD or AP or HUD to DA.

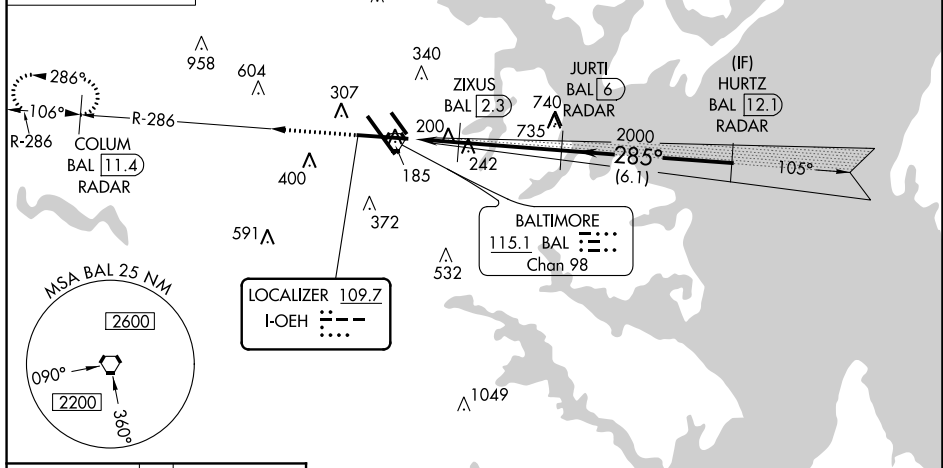
MALSR

MISSED APPROACH: Climb to 2500 on BAL VORTAC R-286 to COLUM/BAL 11.4 DME/RADAR and hold.

ALTERNATE MISSED
APCH FIX
WESTMINSTER
EMI 
117.9
Chan 126
R-179

RADAR REQUIRED

CPDLC



FAF to MAP 5.7 NM

Knots	60	90	120	150	180
Min:Sec	5:42	3:48	2:51	2:17	1:54

