

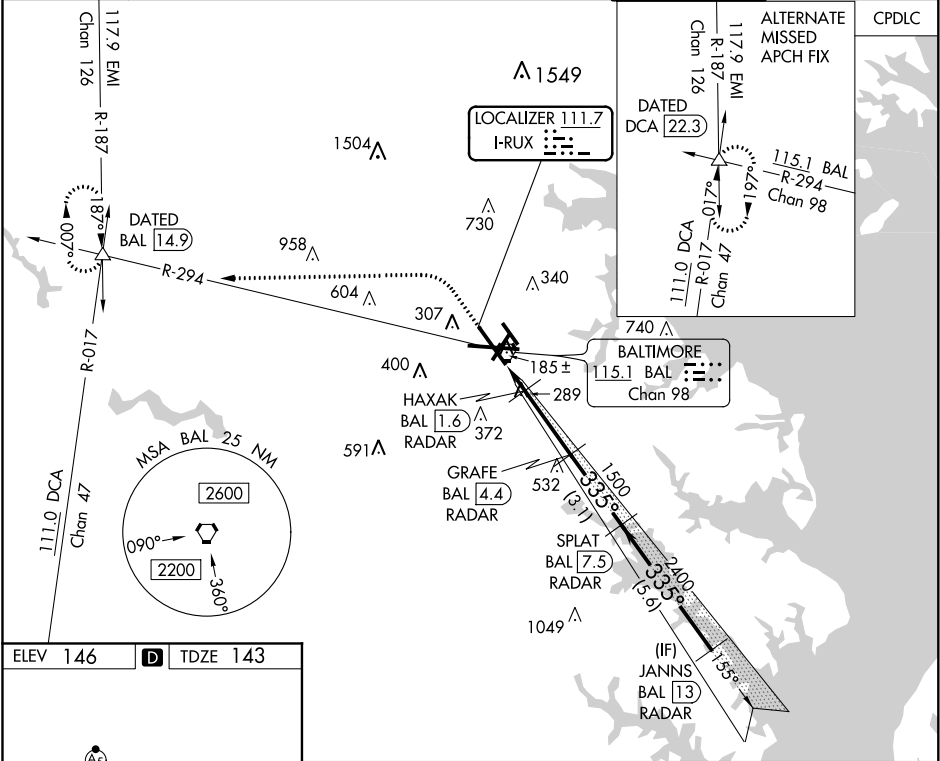
LOC I-RUX 111.7	APP CRS 335°	Rwy ldg TDZE Apt Elev	8301 143 146
---------------------------	------------------------	-----------------------------	---

BALTIMORE/
WASHINGTON INTL THURGOOD MARSHALL (BWI)

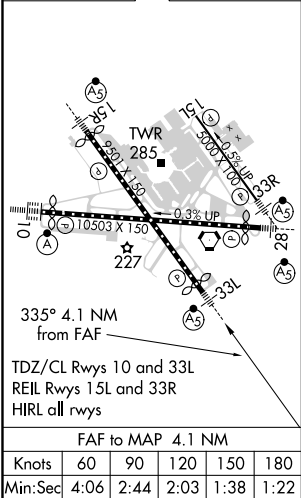
ILS or LOC RWY 33L

DME or RADAR required for LOC only. RADAR required for procedure entry.		MALSR	MISSED APPROACH: Climb to 600 then climbing left turn to 2600 on heading 280° and BAL R-294 to DATED INT/BAL 14.9 DME and hold.
Simultaneous approach authorized with ILS or LOC Rwy 33R. DME from BAL VORTAC.			

D-ATIS 115.1 127.8	POTOMAC APP CON (020°-100°) 119.7 290.475 (131°-180°) (101°-130°) 124.55 317.425 (181°-019°)	BALTIMORE TOWER 119.4 257.8	GND CON 121.9	CLNC DEL 118.05
------------------------------	--	---------------------------------------	-------------------------	---------------------------



ELEV 146	D	TDZE 143
----------	----------	----------



600 hdg 280°		BAL R-294	DATED	VGSI and ILS glidepath not coincident (VGSI Angle 3.00/TCH 72).	
*LOC only.		HAXAK BAL 1.6 RADAR	GRAFE BAL 4.4 RADAR	SPLAT BAL 7.5 RADAR	JANNS BAL 13 RADAR
		1500	1500	2400	4000
CATEGORY		A	B	C	D
S-ILS 33L		343/18		200 (200-½)	
S-LOC 33L		540/24 397 (400-½)		540/40 397 (400-¾)	
		640-1 494 (500-1)	660-1 514 (600-1)	700-1½ 554 (600-½)	880-2¼ 734 (800-2¼)