

D-ATIS 115.1 127.8
POTOMAC APP CON
119.0 282.275 (020°-100°)
119.7 290.475 (131°-180°)
124.55 317.425 (101°-130°)
128.7 307.9 (181°-019°)
BALTIMORE TOWER
119.4 257.8
GND CON
121.9
CLINC DEL
118.05
CPDLC

LOCALIZER 111.7
I-RUX

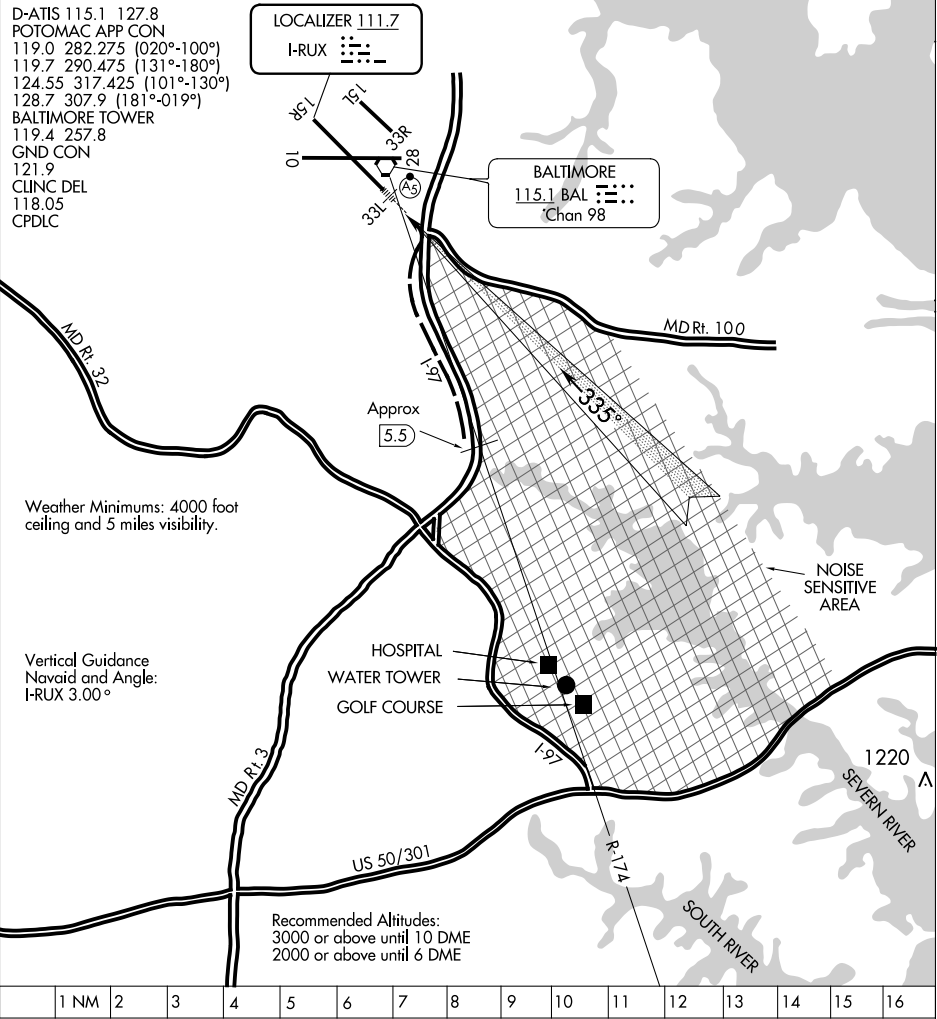
BALTIMORE
115.1 BAL
Chan 98

Weather Minimums: 4000 foot
ceiling and 5 miles visibility.

Vertical Guidance
Navaid and Angle:
I-RUX 3.00°

HOSPITAL
WATER TOWER
GOLF COURSE

Recommended Altitudes:
3000 or above until 10 DME
2000 or above until 6 DME



INTERSTATE VISUAL RWY 33L

Radar vectors will be provided to the BAL 174 RADIAL. When cleared for the Interstate Visual Runway 33L Approach, aircraft will proceed via the BAL 174 radial until over I-97 (Approx. 5.5 DME). Then via I-97 to join Runway 33L final approach course. Runway 33L ILS with MALSRR will be on and available for use. Noise sensitive area east of I-97. This procedure applicable to turbo-jets arriving via OTT VORTAC.