

MIIDY TWO ARRIVAL (RNAV)

BALTIMORE, MARYLAND

NE-3, 03 DEC 2020 to 31 DEC 2020

ARRIVAL ROUTE DESCRIPTION

LAFIN TRANSITION (MIIDY.MIIDY2)

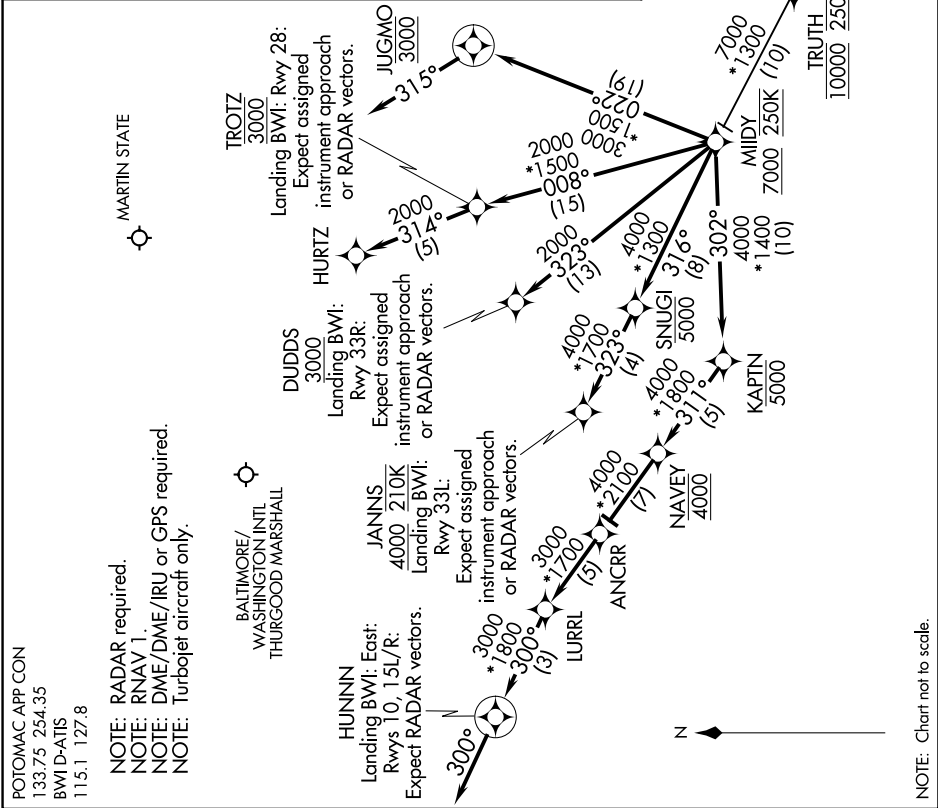
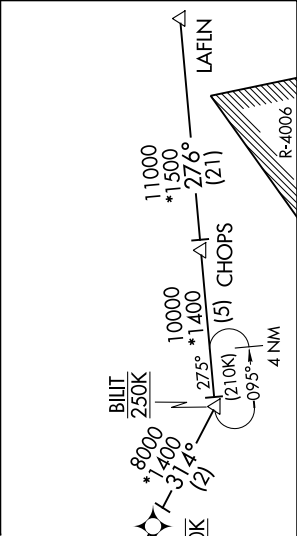
LANDING KBWI RWYS 10, 15L/R: From MIIDY on track 302° to cross KAPTIN at or below 5000, then on track 311° to cross NAVEY at 4000, then on track 311° to ANCR, then on track 311° to LURRL, then on track 300° to HUNNIN, then on track 300°. Expect RADAR vectors to final approach course.

LANDING BWI RWY 28: From MIIDY on track 008° to cross TROTZ at 3000, then on track 314° to HURTZ. Expect assigned instrument approach or RADAR vectors.

LANDING BWI RWY 33L: From MIIDY on track 316° to cross SNUGI at or below 5000, then on track 323° to cross JANNIS at or above 4000 and at 210K. Expect assigned instrument approach or RADAR vectors.

LANDING BWI RWY 33R: From MIIDY on track 323° to cross DUDDS at or above 3000. Expect assigned instrument approach or RADAR vectors.

LANDING MTN: From MIIDY on track 022° to cross JUGMO at 3000, then on heading 315°. Expect RADAR vectors to final approach course.



MIIDY TWO ARRIVAL (RNAV)

BALTIMORE, MARYLAND

NE-3, 03 DEC 2020 to 31 DEC 2020