


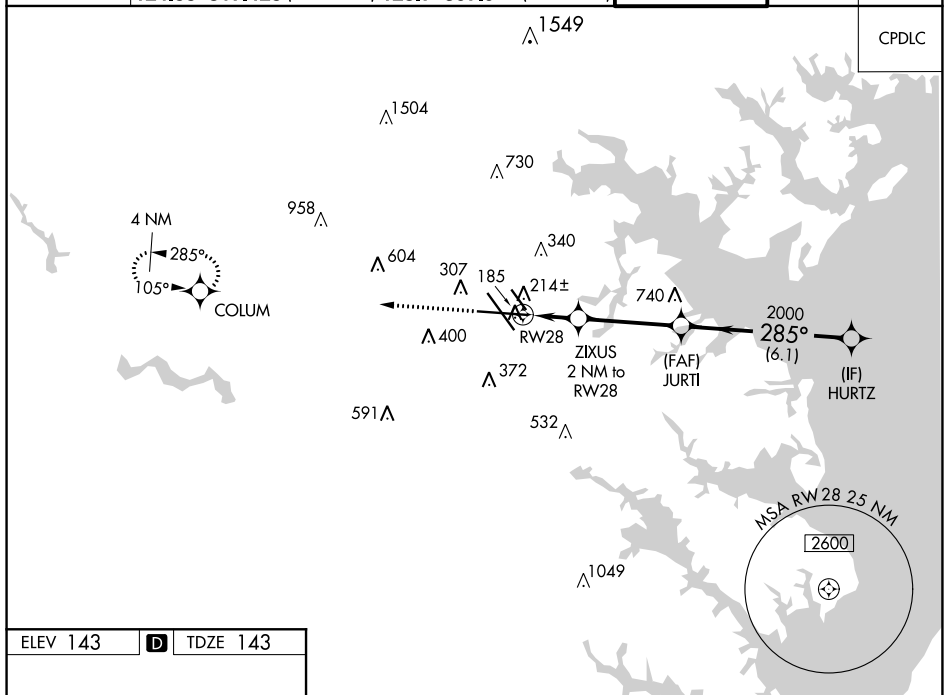


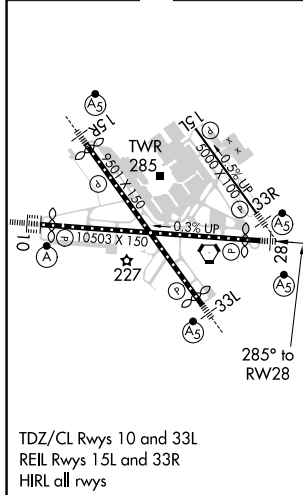
WAAS CH 48808 W28A	APP CRS 285°	Rwy Idg TDZE Apt Elev	9803 143 143
--	------------------------	-----------------------------	---

RNAV (GPS) Y RWY 28
BALTIMORE/WASHINGTON INTL THURGOOD MARSHALL (BWI)

RNP APCH.				MALSR		MISSED APPROACH: Climb to 2500 direct COLUMN and hold.	
 For uncompensated Baro-VNAV systems, LNAV/VNAV NA below -12°C (11°F) or above 54°C (130°F). For inop ALS, increase LNAV/VNAV all Cats visibility to RVR 4000. **RVR 1800 authorized with use of FD or AP or HUD to DA. 							
D-ATIS 115.1 127.8		POTOMAC APP CON 119.0 282.275 (020°-100°) 119.7 290.475 (131°-180°) 124.55 317.425 (101°-130°) 128.7 307.9 (181°-019°)		BALTIMORE TOWER 119.4 257.8		GND CON 121.9	CLNC DEL 118.05



ELEV 143	D	TDZE 143
----------	----------	----------



<div style="display: flex; justify-content: space-around;"> <div style="text-align: center;"> 2500 ↑ </div> <div style="text-align: center;"> COLUM ✦ </div> </div>					
CATEGORY	A		B	C	D
LPV DA **	343/24		200 (200-½)		
LNAV/ VNAV	395/24		252 (300-½)		
LNAV MDA	480/24	337 (400-½)		480/26	337 (400-½)
C CIRCLING	640-1 497 (500-1)	660-1 517 (600-1)	700-1½ 557 (600-1½)		860-2¼ 717 (800-2¼)