

VIRGINIA BEACH, VIRGINIA

RNAV (GPS) RWY 23R

AL-934 (USN) OCEANA NAS (APOLLO SOUCEK FLD) (KNTU)

WAAS CH 71079 W23B	APCH CRS 232°	Rwy Idg 8000 TDZE 21 Arpt Elev 22
--------------------------	------------------	---

MISSED APPROACH: Climb to 3000 direct JUGRO and hold. Continue climb in hold to 3000.

ATIS 317.6	OCEANA APP CON 123.9 266.8	TOWER 127.075 360.2	GND CON 119.6 336.4	CLNC DEL 254.4	ASR/PAR
---------------	-------------------------------	------------------------	------------------------	-------------------	---------

DME/DME RNP-0.3 NA

For uncompensated
Baro-VNAV systems,
LNAV/VNAV NA below -15°C
(5°F) or above 54°C (130°F).

NORFOLK
NS

NORFOLK
INTL

553
ACAPE CHARLES
CCV

(IAE/IE

(FAF)
COXOG

272

2110

362

30

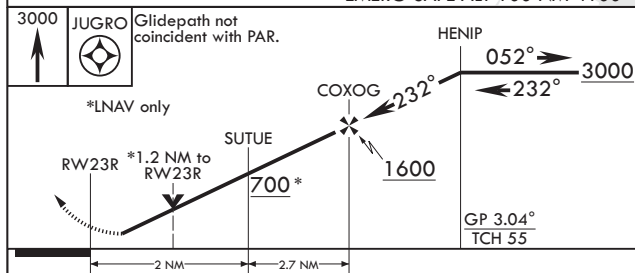
373
A


JUGRO

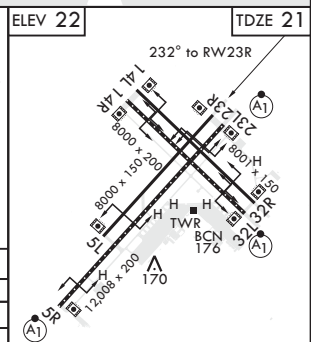
EMERG SAFE ALT 100 NM 4100

MSA RW23R 25 NM

230



CATEGORY	A	B	C	D
LPV DA	221-3/4	200	(200-3/4)	
LNAV/VNAV DA	446-1 7/8	425	(500-1 7/8)	
LNAV MDA	460-1	439 (500-1)	460-1 1/4	439 (500-1 1/4)
 CIRCLING	500-1	478 (500-1)	640-1 1/4 618 (700-1 1/4)	640-2 618 (700-2)



HIRL all Rwys
Wave-Off Lights all Rwys

VIRGINIA BEACH, VIRGINIA

36°49'N - 76°02'W OCEANA NAS (APOLLO SOUCEK FLD) (KNTU)

Amdt 3 10OCT19

RNAV (GPS) RWY 23R

NE-3, 03 DEC 2020 to 31 DEC 2020

NE-3, 03 DEC 2020 to 31 DEC 2020