

AL-934 (USN) OCEANA NAS (APOLLO SOUCEK FLD) (KNTU)

APCH CRS 325°	Rwy Idg	800L	800R
	TDZE	22	21
	Arpt Elev	22	

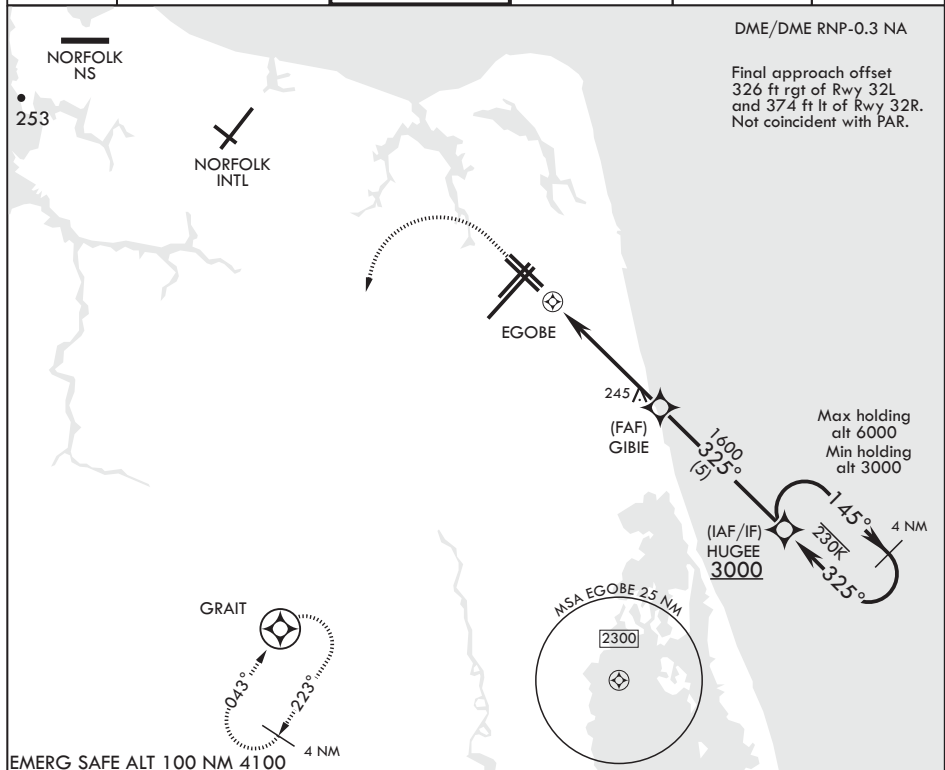
AL-934 (USN) OCEANA NAS (APOLLO SOUCEK FLD) (KNTU)

T * When ALS inop increase CAT AB vis to 1 mile, CAT CD vis to 1 1/8 miles.

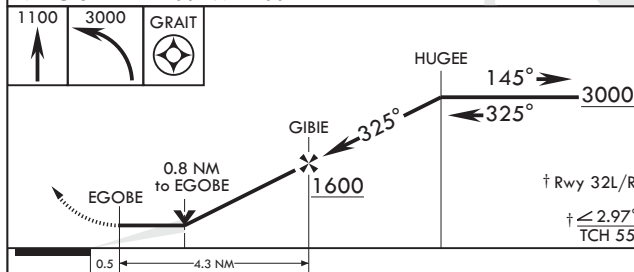
Rwy 32
ALSF 1

MISSED APPROACH: Climbing 1100 then climbing left turn to 3000 direct GRAIT and hold.

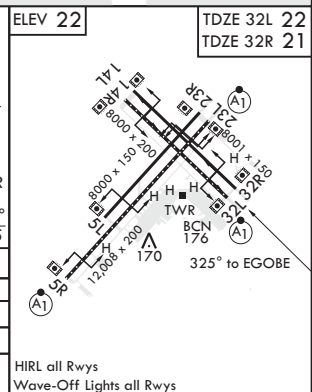
ATIS 317.6	OCEANA APP CON 123.9 266.8	TOWER 127.075 360.2	GND CON 119.6 336.4	CLNC DEL 254.4	ASR/PAR
---------------	-------------------------------	------------------------	------------------------	-------------------	---------



EMERG SAFE ALT 100 NM 4100



CATEGORY	A		B		C		D	
LNAV MDA	480-1	459	(500-1)		480-1 $\frac{3}{8}$	459 (500-1 $\frac{3}{8}$)		
LNAV MDA*	480- $\frac{1}{2}$	458	(500- $\frac{1}{2}$)		480- $\frac{3}{8}$	458	(500- $\frac{3}{8}$)	
CIRCLING	500-1	478	(500-1)		640-1 $\frac{3}{4}$ 618 (700-1 $\frac{3}{4}$)	640-2 618 (700-2)		



VIRGINIA BEACH, VIRGINIA

36°49'N - 76°02'W OCEANA NAS (APOLLO SOUCEK FLD) (KNTU)

RNAV (GPS) RWY 32L/R

Amdt 2 03JAN19

NE-3, 03 DEC 2020 to 31 DEC 2020