

VIRGINIA BEACH, VIRGINIA

RNAV (GPS) RWY 5L

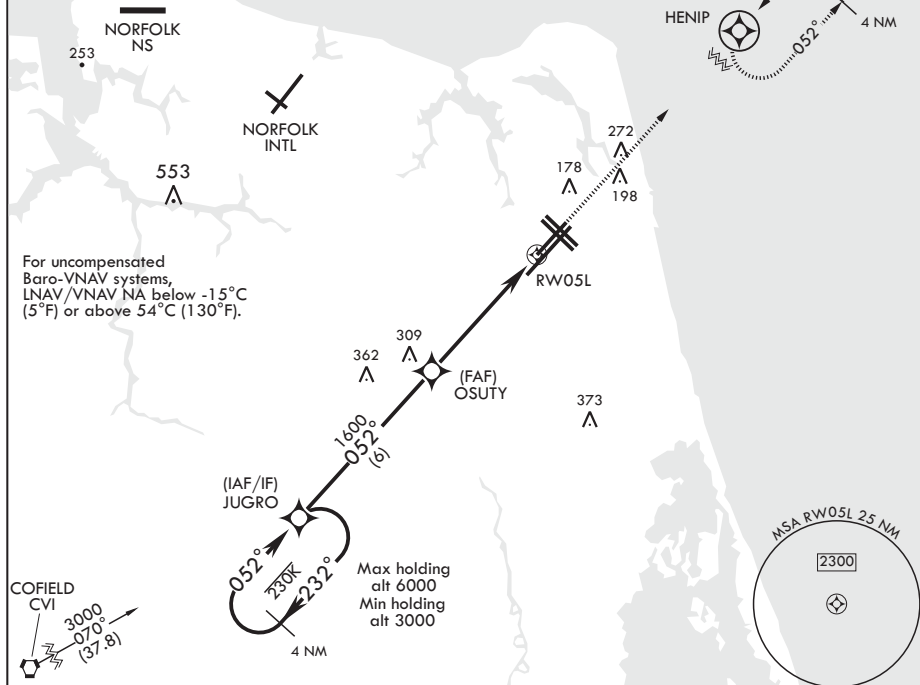
AL-934 (USN) OCEANA NAS (APOLLO SOUCEK FLD) (KNTU)

WAAS CH 63997 W05A	APCH CRS 052°	Rwy Idg 8000 TDZE 20 Arpt Elev 22
---------------------------------	-------------------------	--

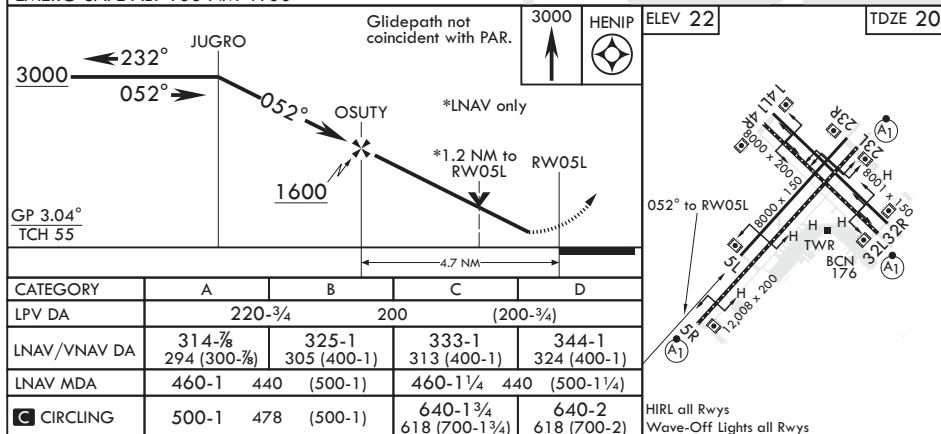
MISSED APPROACH: Climb to 3000 direct HENIP and hold. Continue climb in hold to 3000.

ATIS 317.6	OCEANA APP CON 123.9 266.8	TOWER 127.075 360.2	GND CON 119.6 336.4	CLNC DEL 254.4	ASR/PAR
---------------	-------------------------------	------------------------	------------------------	-------------------	---------

DME/DME RNP-0.3 NA



EMERG SAFE ALT 100 NM 4100



VIRGINIA BEACH, VIRGINIA

36°49'N - 76°02'W OCEANA NAS (APOLLO SOUCEK FLD) (KNTU)

Amdt 3 10OCT19

RNAV (GPS) RWY 5L

NE-3, 03 DEC 2020 to 31 DEC 2020

NE-3, 03 DEC 2020 to 31 DEC 2020