

## TACAN RWY 5L

TACAN NTU Chan <b>113</b>	APCH CRS <b>043°</b>	Rwy Idg <b>8000</b> TDZE <b>20</b> Arprt Elev <b>22</b>
------------------------------	-------------------------	---

AL-934 [USN]

OCEANA NAS (APOLLO SOUCEK FIELD)

(KNTU)

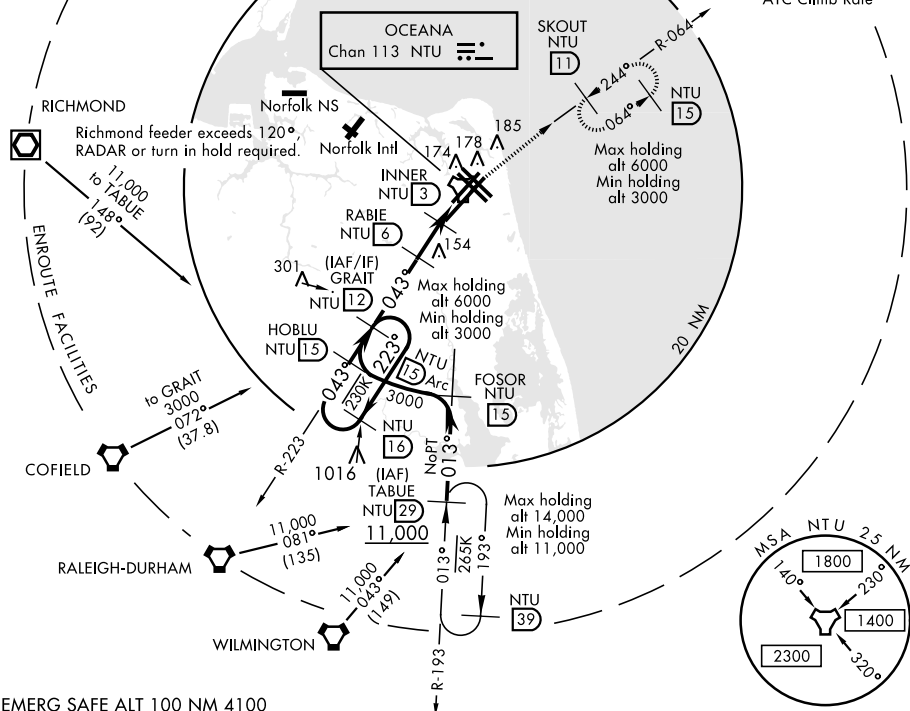
<p>† MISSED APPROACH: Climb to 3000 via R-223 to NTU TACAN and via R-064 to SKOUT and hold.</p>
---

ATIS <b>317.6</b>	APP CON <b>123.9 266.8</b>	OCEANA TOWER <b>127.075 360.2</b>	GND CON <b>119.6 336.4</b>	CLNC DEL <b>254.4</b>	ASR/ PAR
----------------------	-------------------------------	--------------------------------------	-------------------------------	--------------------------	-------------

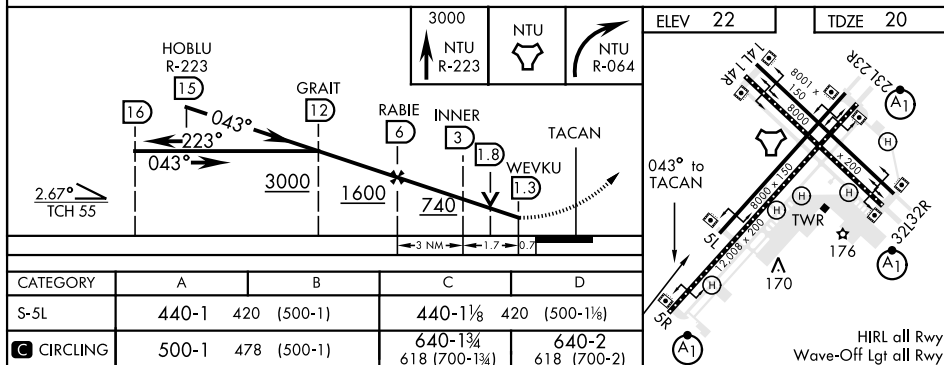
	Knots	60	120	180	240	300	360
	V/V(fpm)	210	420	630	840	1050	1260

CAUTION: Final approach course 17° from rwy centerline at 3000' from threshold.

† CAUTION: Missed Approach  
Minimum Climb Rate to 3000  
ATC Climb Rate



EMERG SAFE ALT 100 NM 4100



VIRGINIA BEACH, VIRGINIA

36°49'N-76°02'W

OCEANA NAS (APOLLO SOUCEK FIELD) (KNTU)

Amdt 4 10OCT19

## TACAN RWY 5L