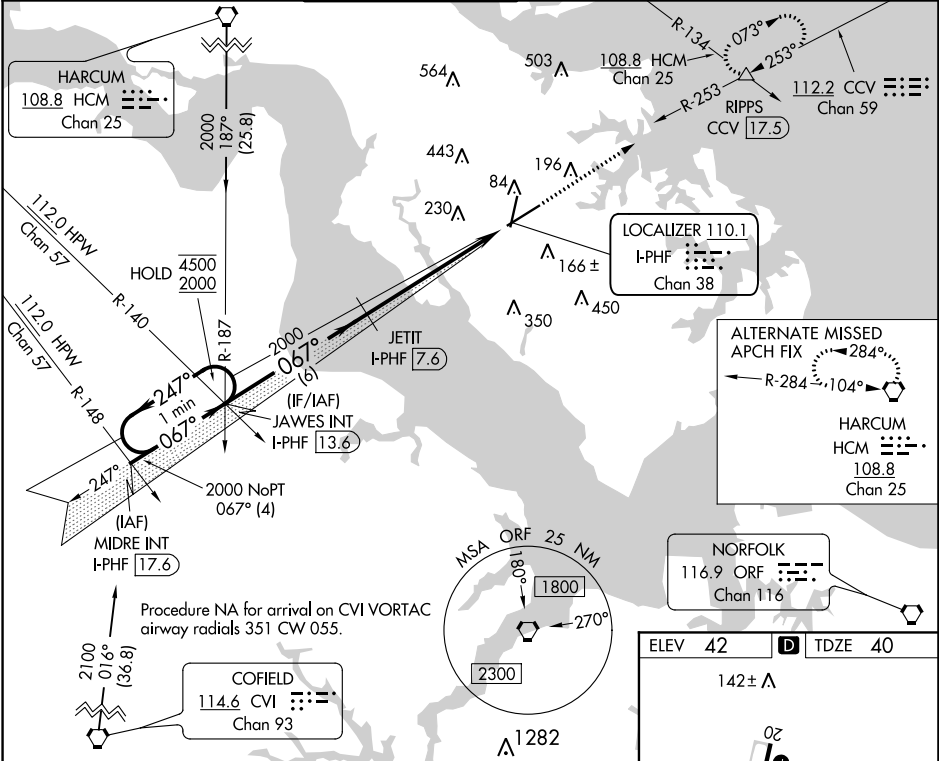


LOC/DME I-PHF	APP CRS	Rwy Idg	8003
<b>110.1</b>	<b>067°</b>	TDZE	<b>40</b>
Chan 38		Apt Elev	<b>42</b>

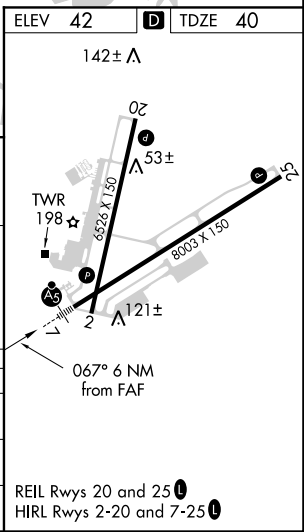
ILS or LOC RWY 7  
NEWPORT NEWS/WILLIAMSBURG INTL (PHF)

DME required.	MALSR	MISSED APPROACH: Climb to 2500 on heading 067° and on CCV VORTAC R-253 to RIPPS INT/CCV 17.5 DME and hold, continue climb-in-hold to 2500.
# RVR 1800 authorized with use of FD or AP or HUD to DA.		

ATIS	NORFOLK APP CON	NEWPORT NEWS TOWER*	GND CON	CLNC DEL	UNICOM
<b>128.65</b>	<b>125.7 335.625</b>	<b>118.7 (CTAF) 0 257.9</b>	<b>121.9 348.6</b>	<b>121.65 225.4</b>	<b>122.95</b>



One Minute Holding Pattern	JAWES INT I-PHF 13.6	JETIT I-PHF 7.6	2500 hdg 067°	CCV R-253	RIPPS
	4500 ← 247°	2000 → 067°	2000	*I-PHF 2.8	*LOC only
	GS 3.00° TCH 59	6 NM	4.8 NM	1.2 NM	
CATEGORY	A	B	C	D	
S-ILS 7 #	240/24		200 (200-½)		
S-LOC 7	480/24	440 (500-½)	480/40	440 (500-¾)	
CIRCLING	520-1 478 (500-1)	540-1 498 (500-1)	760-2 718 (800-2)	780-2¼ 738 (800-2¼)	



NE-3, 03 DEC 2020 to 31 DEC 2020

NE-3, 03 DEC 2020 to 31 DEC 2020