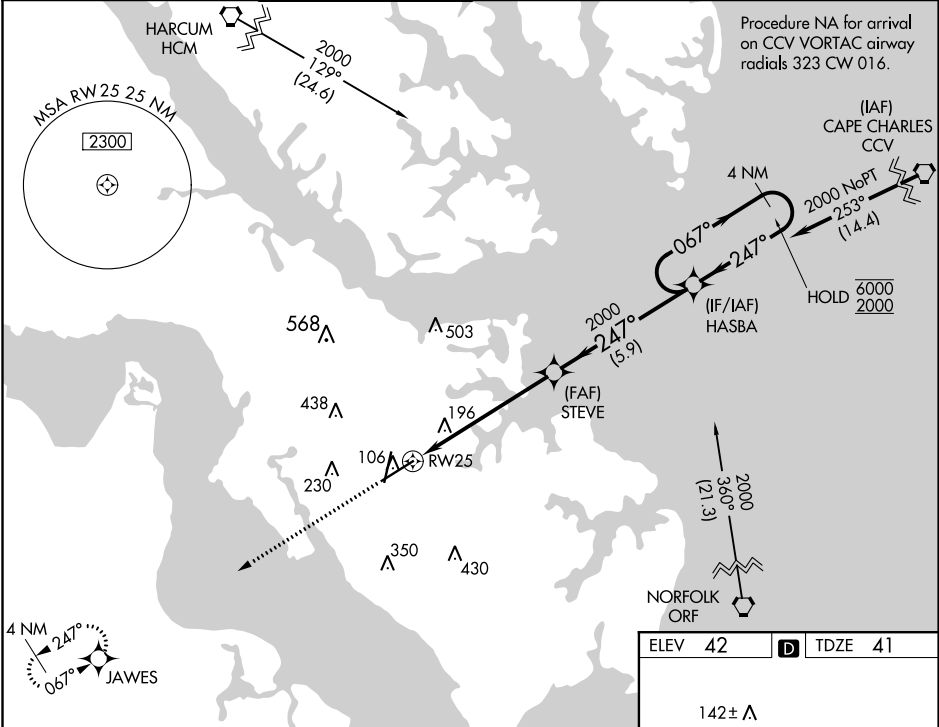


WAAS CH 45510 W25A	APP CRS 247°	Rwy Idg 8003 TDZE 41 Apt Elev 42
--	------------------------	---

RNAV (GPS) RWY 25
NEWPORT NEWS/WILLIAMSBURG INTL (PHF')

RNP APCH.		MISSED APPROACH: Climb to 2000 direct JAWES and hold.			
For uncompensated Baro-VNAV systems, LNAV/VNAV NA below -11° C or above 54° C.					
ATIS 128.65	NORFOLK APP CON 125.7	NEWPORT NEWS TOWER★ 118.7(CTAF) 257.9	GND CON 121.9 348.6	CLNC DEL 121.65 225.4	UNICOM 122.95



2000	JAWES	VGSI and RNAV glidepath not coincident (VGSI Angle 3.00/TCH 71).			
*LNAV only		STEVE 2000 HASBA 4 NM Holding Pattern			
RW25		067° → 6000 ← 247° 2000			
1.2		GP 3.00° TCH 55			
CATEGORY		A	B	C	D
LPV DA		241-3/4 200 (200-3/4)			
LNAV/VNAV DA		516-1 5/8 475 (500-1 5/8)			
LNAV MDA		480-1 439 (500-1) 480-1 1/4 439 (500-1 1/4)			
CIRCLING		520-1 478 (500-1)	540-1 498 (500-1)	760-2 718 (800-2)	780-2 1/4 738 (800-2 1/4)

