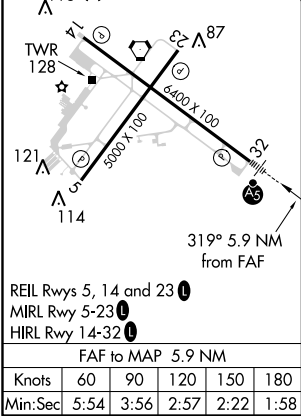
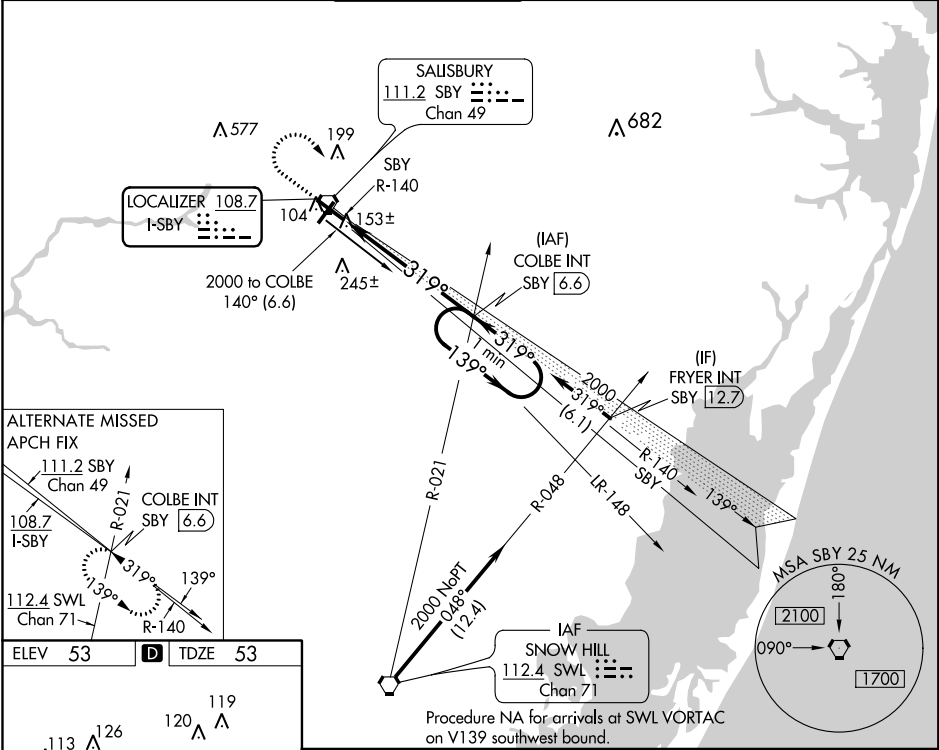


LOC I-SBY <b>108.7</b>	APP CRS <b>319°</b>	Rwy Idg TDZE Apt Elev	<b>6400</b> <b>53</b> <b>53</b>
---------------------------	------------------------	-----------------------------	---------------------------------------

ILS or LOC RWY 32  
SALISBURY-OCEAN CITY WICOMICO RGNL (SBY)

When local altimeter setting not received, use Georgetown altimeter setting and increase DA 52 feet and all MDA 60 feet, and increase S-LOC 32 Cat C visibility ¼ mile.	MALSR	MISSED APPROACH: Climb to 700 then climbing right turn to 2000 on heading 170° and on SBY VORTAC R-140 to COLBE INT/SBY VORTAC 6.6 DME and hold.
---	-------	--

ASOS <b>118.325</b>	PATUXENT APP CON ★ <b>127.95 314.0</b>	SALISBURY TOWER ★ <b>119.425</b> (CTAF) <b>0</b>	GND CON <b>123.775</b>	CLNL DEL ★ <b>123.775</b>	UNICOM <b>122.95</b>
------------------------	---	---	---------------------------	------------------------------	-------------------------



ELEV 53	D	TDZE 53
REIL Rwy 5, 14 and 23	MIRL Rwy 5-23	HIRL Rwy 14-32
FAF to MAP 5.9 NM		
Knots	60	90 120 150 180
Min:Sec	5:54	3:56 2:57 2:22 1:58

700	2000	SBY R-140	COLBE INT
↑	hdg 170°		
*LOC only			
SBY 0.8	*SBY 1.8	2000	COLBE INT SBY 6.6
One Minute Holding Pattern			
GS 3.00° TCH 54			
CATEGORY	A	B	C D
S-ILS 32	253-½ 200 (200-½)		
S-LOC 32	420-½ 367 (400-½) 420-¾ 367 (400-¾)		
CIRCLING	480-1 427 (500-1)	520-1 467 (500-1)	520-1½ 467 (500-1½) 620-2 567 (600-2)

NE-3, 03 DEC 2020 to 31 DEC 2020

NE-3, 03 DEC 2020 to 31 DEC 2020