

WAAS CH 48912 W32A	APP CRS 319°	Rwy Idg 6400 TDZE 53 Apt Elev 53
----------------------------------------	------------------------	-------------------------------------------------------------

RNAV (GPS) RWY 32

SALISBURY-OCEAN CITY WICOMICO RGNL (SBY)

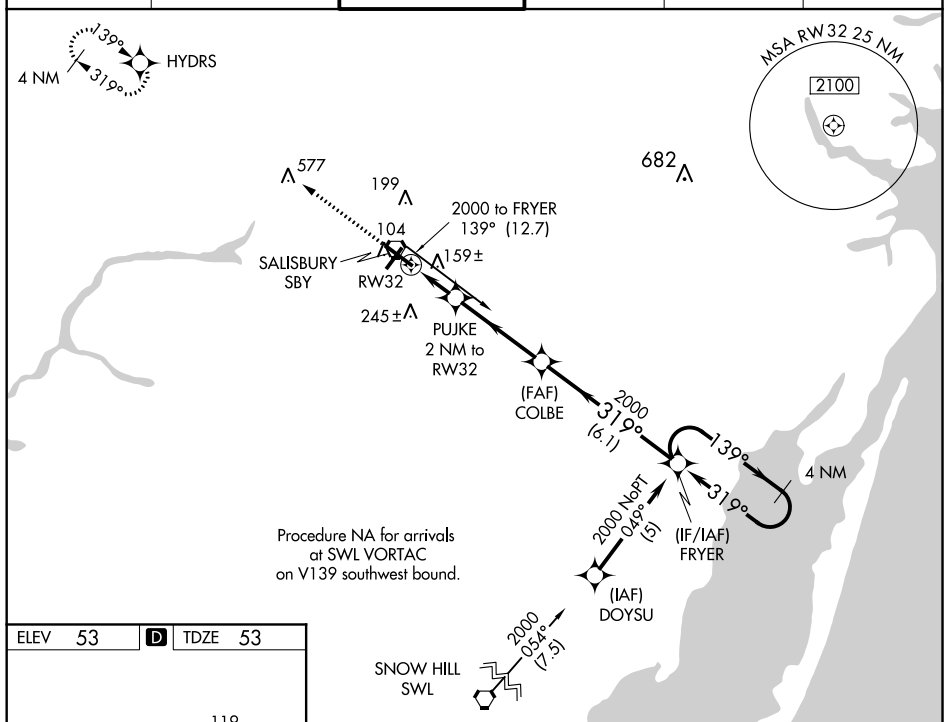
T For uncompensated Baro-VNAV systems, LNAV/VNAV NA below -15°C (5°F) or above 49°C (120°F). DME/DME RNP-0.3 NA. When local altimeter setting not received, use Georgetown altimeter setting and increase all DA 52 feet and all MDA 60 feet, increase LNAV Cat C visibility 1/4 mile. For inoperative MALSR, increase LNAV Cat D visibility to 1 1/4 miles. VDP and Baro-VNAV NA when using Georgetown altimeter setting.

MALSR

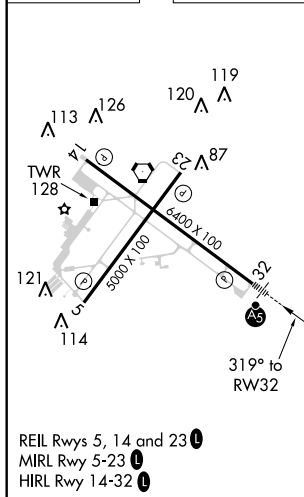


MISSED APPROACH:
Climb to 2100 direct
HYDRS and hold.

ASOS 118.325	PATUXENT APP CON ★ 127.95 314.0	SALISBURY TOWER ★ 119.425 (CTAF) 0	GND CON 123.775	CLNL DEL ★ 123.775	UNICOM 122.95
-----------------	------------------------------------	---------------------------------------	--------------------	-----------------------	------------------



ELEV	53	D	TDZE	53
------	----	----------	------	----



2100 ↑	HYDRS ✦	* LNAV only COLBE PUJKE 2 NM to RW32 * 1 NM to RW32 RW32 * 740 2000 319° 139° 319° 2000 4 NM Holding Pattern GP 3.00° TCH 54			
CATEGORY		A	B	C	D
LPV	DA	253-½ 200 (200-½)			
LNAV/VNAV	DA	458-1 405 (500-1)			
LNAV	MDA	420-½ 367 (400-½)			420-1 367 (400-1)
CIRCLING		480-1 427 (500-1)	520-1 467 (500-1)	520-1½ 467 (500-½)	620-2 567 (600-2)

RNAV (GPS) RWY 32