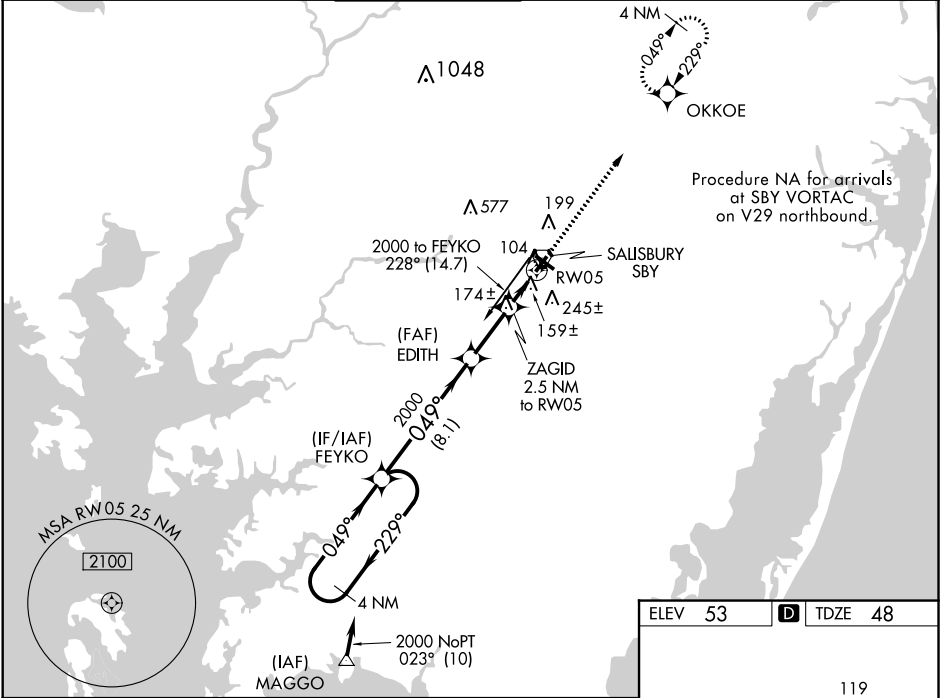


WAAS CH 62820 W05A	APP CRS 049°	Rwy Idg TDZE Apt Elev	5000 48 53
--	------------------------	-----------------------------	---------------------------------------

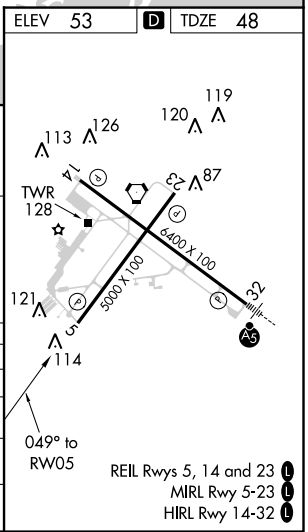
RNAV (GPS) RWY 5
SALISBURY-OCEAN CITY WICOMICO RGNL (SBY)

<p>⚠ Baro-VNAV NA when using Georgetown altimeter setting. For uncompensated Baro-VNAV systems, LNAV/VNAV NA below -15°C (5°F) or above 49°C (120°F). DME/DME RNP-0.3 NA. Visibility reduction by helicopters NA. When local altimeter setting not received use Georgetown altimeter setting and increase all DA 52 feet and all MDA 60 feet; increase LPV all Cats, LNAV/VNAV all Cats, and LNAV Cats C/D visibility ¼ mile.</p>	<p>MISSED APPROACH: Climb to 2000 direct OKKOE and hold.</p>
--	--

ASOS 118.325	PATUXENT APP CON ★ 127.95 314.0	SALISBURY TOWER ★ 119.425 (CTAF) 0	GND CON 123.775	CLNL DEL ★ 123.775	UNICOM 122.95
------------------------	---	---	---------------------------	------------------------------	-------------------------



4 NM Holding Pattern		FEYKO		EDITH		2000		*LNAV only.		2000		OKKOE	
2000 ← 229°				2000		ZAGID 2.5 NM to RW05		049°		RW05			
GP 3.00° TCH 39				2000		*880							
		8.1 NM		3.4 NM		2.5 NM							
CATEGORY		A		B		C		D					
LPV DA				342-1		294 (300-1)							
LNAV/ VNAV		DA		460-1½		412 (500-1½)							
LNAV MDA				440-1		392 (400-1)				440-1¼		392 (400-1¼)	
CIRCLING		480-1 427 (500-1)		520-1 467 (500-1)		520-1½ 467 (500-1½)				620-2		567 (600-2)	



NE-3, 03 DEC 2020 to 31 DEC 2020

NE-3, 03 DEC 2020 to 31 DEC 2020