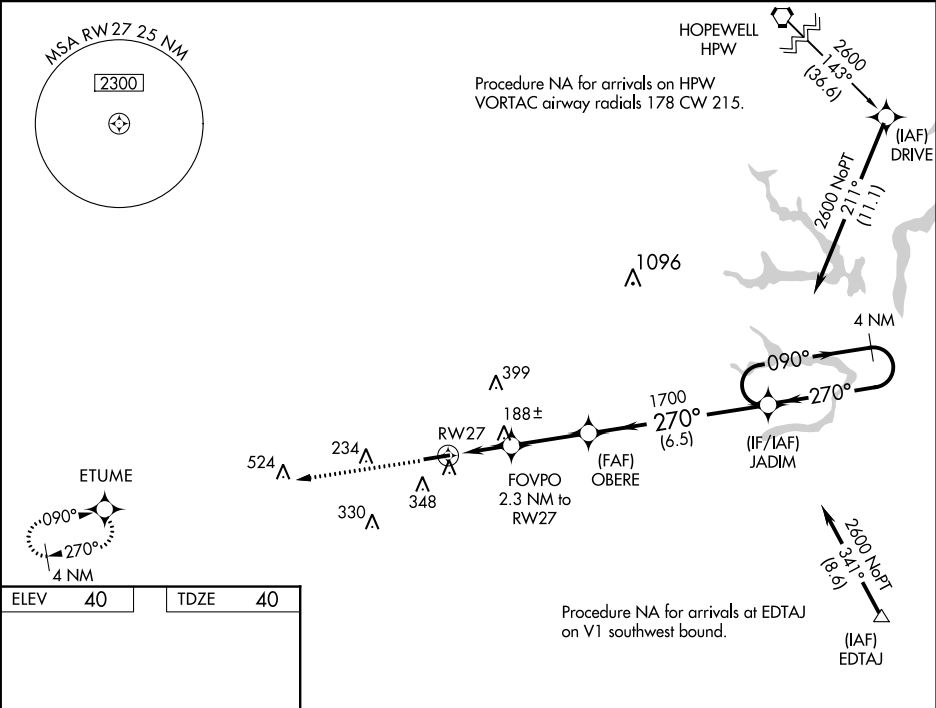


WAAS CH 90227 W27A	APP CRS 270°	Rwy Idg TDZE Apt Elev	4977 40 40
--	------------------------	-----------------------------	---------------------------------------

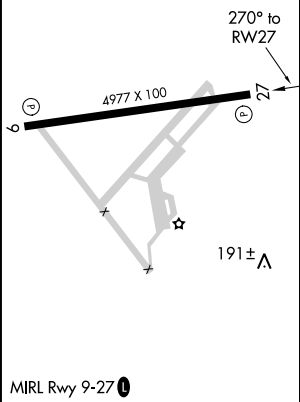
RNAV (GPS) RWY 27
FRANKLIN RGNL (F'KN)

RNP APCH.	<p>⚠ For uncompensated Baro-VNAV systems, LNAV/VNAV NA below -15°C or above 54°C. Baro-VNAV and VDP NA when using Suffolk altimeter setting. When local altimeter setting not received, use Suffolk altimeter setting: increase LPV DA to 404 feet and visibility all Cats 1/8 SM; increase LNAV/VNAV DA to 392 feet and visibility all Cats 1/4 SM; increase all MDA 40 feet and LNAV Cats C/D visibility 1/8 SM. Rwy 27 helicopter visibility reduction below 3/4 SM NA.</p>	MISSED APPROACH: Climb to 2600 direct ETUME and hold.
-----------	--	--

AWOS-3PT 124.675	NORFOLK APP CON 127.9 269.425	UNICOM 122.8 (CTAF) 0
----------------------------	---	---------------------------------



ELEV 40	TDZE 40
---------	---------



2600	ETUME	* LNAV only.	JADIM	4 NM Holding Pattern
		FOVPO 2.3 NM to RW27	OBERE 1700	090° → 2600 ← 270°
		* 1.1 NM to RW27		GP 3.00° TCH 40
		* 800	1700	
		1.1 NM	1.2 NM	2.8 NM
				6.5 NM
CATEGORY	A	B	C	D
LPV DA	366-1 326 (400-1)			
LNAV/VNAV DA	354-1 314 (400-1)			
LNAV MDA	440-1	400 (400-1)	440-1 400 (400-1)	

NE-3, 03 DEC 2020 to 31 DEC 2020

NE-3, 03 DEC 2020 to 31 DEC 2020